

**PELICAN™**

**>2006 CATALOG**



**PROFESSIONAL  
LIGHTING  
INSTRUMENTS**

**LIGHTS**

# > PERSONAL LIGHTS



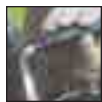
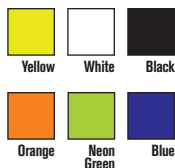
CAT NO. 1900

CAT NO. 2140

CAT NO. 2250

## MITYLITE™ 1900 CAT NO. 1900

- Tested lumen value 7.0
- Vacuum metalized, Xenon fired lamp module
- 2 AAA alkaline batteries (included)
- 2 hrs battery burn time
- Twist on/off lens shroud
- Made of hi-impact Xenoy® resin
- Submersible to 500 feet
- Approvals: **UL** – Class I, Div 2: Groups C,D, T3C; **CSA** – Class I; Div 2; Group ABCD, T3C; Class II; Div 2; Group G; **AUS** – Ex ia s IIB T4 IP67; **ATEX** – II 3 GD EEx nL IIC T4 135°C
- Shirt clip
- 90° “lightbender”



Lightbender

## TRACKER™ 2140 CAT NO. 2140

- Tested lumen value 8.0
- Vacuum metalized, Xenon fired lamp module
- 2 AAA batteries (included)
- 2.5 hrs battery burn time
- Twist on/off lens shroud
- Polycarbonate Resin
- Submersible to 500 feet
- Approvals: **UL** – Class I; Div 2; Groups CD, T3C; **ATEX** – II 3 G EEx nL IIC T5
- Molded-in snap hook
- Stainless steel key ring
- Hat/clothing clip



## VERSABRITE™ 2250 CAT NO. 2250

- Tested lumen value 7.0
- Vacuum metalized, Xenon fired lamp module
- 2 AA alkaline batteries (included)
- 5-6 hrs battery burn time
- Twist on/off lens shroud
- Water resistant
- Approvals: **FM** – Class I; Div 2; Group ABCD, T4; **MSHA** – 10C-635-0; **CSA** – CL I DIV 2: GROUP ABCD, CL II; DIV 2; GROUP G, T3C; **ATEX** – II 3 G EEx nL IIC T4
- Swivel head
- Hands-free
- Night vision lens
- Head strap Velcro®
- Magnet





**VERSABRITE™ 2270**

**CAT NO. 2270**

- Tested lumen value 8.0
- Vacuum metalized, Xenon fired lamp module
- 2 AA alkaline batteries (included)
- 4.5 hrs battery burn time
- Twist on/off lens shroud
- Water resistant
- Approvals: **FM** – Class I; Div 2; Group ABCD, T4; **MSHA** – 10C-635-0; **CSA** – Class I; Div 2; Group ABCD, CL II, DIV 2; GROUP G, T3C; **ATEX** – II 3 G EEx nL IIC T4
- Incorporates all the features of the VersaBrite with the addition of the 1” diameter modified spot reflector module
- Covers 4 times the area of the collimated beam of the VersaBrite™ 2250



Black

**MITYLITE™ 2300**

**CAT NO. 2300**

- Tested lumen value 8.0
- Vacuum metalized, Xenon fired lamp module
- 2 AA alkaline batteries (included)
- 4.2 hrs battery burn time
- Twist on/off lens shroud
- Made of hi-impact Xenoy® resin with polycarbonate lens
- Water resistant
- Approvals: **UL** – Class I; Div 2; Group CD; Class I; Zone 2; Group IIB, T3C; **FM** – Class I; Div 2; Group ABCD, T3A; **MSHA** – 10C-637-0; **CSA** – Class I; Div 2; Group ABCD, T3C; Class II; Div 2; Group G; **ATEX** – II 3 GD EEx nL IIC T4 135°C
- Optional Cordura® holster (see page 34)



Yellow



Black

**MITYLITE™ 2340**

**CAT NO. 2340**

- Tested lumen value 8.0
- Vacuum metalized, Xenon fired lamp module
- 2 AA alkaline batteries (included on select packaging)
- 4.2 hrs battery burn time
- Handy push tail button on/off switch
- Made of hi-impact Xenoy® resin with polycarbonate lens
- Water resistant
- Approvals: **UL** – Class I; Div 2; Group CD; Class I; Zone 1; Group IIB, T3C; **CSA** – Class I; Div 2; Group ABCD, T3C; Class II; Div 2; Group FG; **FM** – Class I; Div 2; Groups ABCD, T3A; **MSHA** – 10C-637-0; **AUS** – Zone 0 IIB T4 IP65; **ATEX** – II 3 G EEx nL IIC T4
- Optional Cordura® holster (see page 34)



Yellow



Black

# > MEDIUM DUTY LIGHTS



CAT NO. 1820

CAT NO. 1800

CAT NO. 2000

## PELILITE™ 1800 CAT NO. 1800

- Tested lumen value 15.0
- Pre-focused, Xenon fired lamp module
- 2 C alkaline batteries
- 7.5 hrs battery burn time
- Twist on/off lens shroud
- Unbreakable ABS body with a hi-impact polycarbonate lens
- Submersible to 500 feet
- Approvals: **UL** – Class I; Div 2; Group D, Class 1, Zone 2, Group IIA, T3; **FM** – Class I, II; Div 2; Group ABCD/Class II, Div 2, Group G, T4; **MSHA** – 10C-628-0; **CSA** – Class I; Div 2; Group ABCD, T3C; Class II; Div 2; Group G; **ATEX** – II 3 GD EEx nL IIC T4 135\_C
- 400% more light than ordinary flashlights
- Adjustable wrist lanyard



## POCKET SABRE™ 1820 CAT NO. 1820

- Tested lumen value 15.0
- Pre-focused, Xenon fired lamp module
- 2 C alkaline batteries (included on select packaging)
- 7.5 hrs battery burn time
- Twist on/off lens shroud
- Submersible to 500 feet
- Approvals: **UL** – Class I; Div 2; Group D, T2D; **FM** – Class I, II, III; Div 2; Groups ABCD/FG, T4; **ATEX** – II 3 G EEx nL IIC T5; **CSA** – Class I, II, III; Div 2; Groups ABCD/FG, T3C
- Unbreakable ABS body with a hi-impact polycarbonate lens
- 400% more light than ordinary flashlights
- Adjustable wrist lanyard



## SABRELITE™ 2000 CAT NO. 2000

- Tested lumen value 33.0
- Precision aluminum, Xenon fired lamp module
- 3 C alkaline batteries
- 4-5 hrs battery burn time
- Twist on/off lens shroud
- Unbreakable Lexan body with a hi-impact nylon lens
- Submersible to 500 feet
- Approvals: **UL** – Class I, Div I, Group CD, T3C; Class I, Zone I, Group IIA, IIB, T3C; **FM** – Class I, II; Div 2; Group ABCD/G, T3C; **MSHA** – 10C-629-2; **CSA** – Class I; Div 2; Group ABCD, T3C; Class II; Div 2; Group G; **AUS** – Ex e ib IIC T4 IP67 Cert #AUS Ex 04.3953X; **ATEX** – II 3GD EEx nL IIC T4 135
- Stainless steel split ring
- Adjustable wrist lanyard
- Spring-loaded belt clip





CAT NO. 2450

CAT NO. 2400

**STEALTHLITE™ 2400**  **CAT NO. 2400**

- Tested lumen value 25.0
- Precision aluminum, Xenon fired lamp module
- 4 AA alkaline batteries (included on select packaging)
- 7.5 hrs battery burn time
- One-handed safety switch
- Unbreakable ABS body with a hi-impact polycarbonate lens
- Submersible to 500 feet
- Approvals: **UL** – Class I; Div 1; Group D, Zone 1, IIA, T3; **FM** – Class I; Div 2; Group ABCD, T3A; **MSHA** – 10C-633-0; **CSA** – Class I; Div 2; Group ABCD, T3C; Class II; Div 2; Group G; **ATEX** – II 3 GD EEx nL IIC T4 135°C
- Double shock mounted battery compartment
- Adjustable wrist lanyard
- Optional Cordura® holster (see page 34)



**STEALTHLITE™ RECHARGEABLE 2450**  **CAT NO. 2450**

Same specifications as StealthLite™ 2400 except:

- Tested lumen value 28
- System includes StealthLite™, drop-in handy Smart Charger desk/dash mount base with 110V charger and hi-capacity industrial NiMH battery pack
- Burn time 3.5 hrs. per charge
- Approvals: **FM** – Class I; Div 2, Group ABCD, T3; **CSA** – Class I; Div 2; Group ABCD, T3C; Class II; Div 2; Group G; **ATEX** – II 3 G Ex N IIC T4 135°C



12V Plug-in  
Charger  
CAT. NO. 8056F



110V  
Transformer  
CAT. NO. 2467



Direct  
Wiring Rig  
CAT. NO. 6061F



NiMH  
Battery Pack  
CAT. NO. 2469

# > MEDIUM DUTY LIGHTS



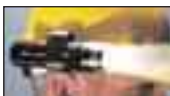
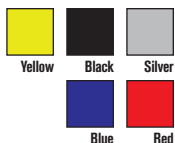
CAT NO. 2420

CAT NO. 2430

## MITYLITE™ 2420

- Tested lumen value 31.5
- PR based, Xenon fired lamp module
- 4 AA alkaline batteries (included)
- 3.5 hrs battery burn time
- Twist on/off lens shroud
- Unbreakable ABS body with hi-impact polycarbonate lens
- Submersible to 500 feet
- Approvals: **UL** – Class 1; Div 1; Group C,D, T2A; **ATEX** – II 2 G EEx ia e IIB T3
- Versatile mounting clip (for hard hats and dive mask straps)
- Adjustable lanyard and foam lined battery contact included

## CAT NO. 2420



Versatile clip fits on dive mask strap or hard hat.

## MITYLITE™ 2430

- Tested lumen value 32
- PR based, Xenon fired lamp module
- 4 AA alkaline batteries (included)
- 3.5 hrs battery burn time
- Handy push button on/off switch
- Virtually indestructible ABS body with polycarbonate lens
- Water resistant
- Approvals: **UL** – Class 1:Div 2,Group:C,D T2A; **ATEX** – Pending
- Corrosion proof
- Helmet clip
- Adjustable lanyard and foam lined battery contact included

## CAT NO. 2430



Versatile clip fits on hard hat.



**CAT NO. 2600**

**HEADSUP LITE™ 2600** 

**CAT NO. 2600**

- Tested lumen value 25
- Headlight with one low-intensity and one hi-intensity Krypton lamp (two total)
- 4 AA alkaline batteries (included)
- 2-3 hrs (primary) and 4-5 hrs (backup) battery burn time
- Twist on/off switch
- Corrosion proof ABS polymer
- Submersible to 500 ft.
- Approvals: **FM** – Class I; Div 2; Group ABCD, T4A; **CSA** – Class II; Div 2; Group FG, Class III; Div 2, T3C; **MSHA** – 10C-641-0; **ATEX** – II 3 GD EEx nL IIC T4 135°C
- Exclusive “Super Pad” comfortable forehead pad
- Includes a rubber strap for helmet and hard hat use and a cloth strap for hat and bare head use



# > LIGHT KITS



**CAT NO. 1945**

**CAT NO. 1940**

## L1 LED KNIFE/LITE COMBO CAT NO. 1940

- L1 1930 LED (see page 18 for features)
- Tested lumen value 8.9
- 4 LR44 alkaline coin cells (included)
- Lock back pocket knife with 1 7/8" hollow ground stainless steel serrated blade
- Key chain ring
- Breakaway safety neck lanyard
- Packaged in a reusable box with molded plush velvet liner



## L1 LED LIGHT AND ATTACHMENT SYSTEM CAT NO. 1945

- L1 1930 LED (see page 18 for features)
- Tested lumen value 8.9
- 4 LR44 alkaline coin cells (included)
- Rotating L1 light attachment
- 1 hook and 3 loops
- 2 night vision discs
- Breakaway safety neck lanyard
- Packaged in a reusable box with molded plush velvet liner





**CAT NO. 1950**

**CAT NO. 1980**

**MINI SYSTEM** 

**CAT NO. 1950**

- MityLite™ 1900 (see page 6 for features)
- Tested lumen value 7.0
- 2 AAA batteries (included)
- Lightbender
- 2 night vision discs
- Packaged in a reusable box with molded plush velvet liner



**KNIFE/LITE COMBO** 

**CAT NO. 1980**

- MityLite™ 1900 (see page 6 for features)
- Tested lumen value 7.0
- 2 AAA batteries (included)
- Lock back pocket knife with 1 7/8" hollow ground stainless steel serrated blade
- Packaged in a reusable box with molded plush velvet liner



# > BLACK KNIGHT SERIES™



CAT NO. 7050

CAT NO. 2320

## M6 2320

## CAT NO. 2320

- Tested lumen value 74.0
- 1.3 amp Xenon lamp module
- 2 CR123 lithium cells (included)
- 1 hr battery burn time
- Tail switch provides constant on/off or momentary action
- CNC-machined aluminum with deep knurled grip
- Water resistant
- Safety lockout switch prevents inadvertent switching
- Cordura® holster included
- Third party holsters available (see page 35)
- Weapon mount available (see page 34)



Silver



Black

## M9 RECHARGEABLE 7050

## CAT NO. 7050

- Tested lumen value 122.0
- Precision aluminum, Halogen fired lamp module
- Nicad Rechargeable battery pack
- 1.25 hrs battery burn time
- Push button switch
- Light weight body made of Xenoy® with high impact polycarbonate lens and ABS shroud
- Water resistant
- Approvals: **ATEX** - II 3 G EEx nL IIC T1; **CSA** - CL I, DIV 2, GROUP ABCD T3C
- O-ring sealed
- Over 1000 charges per battery pack
- Available with fast or trickle charger
- Sure-grip vinyl sheath resists chemicals and extreme temperatures
- LED charge state indicator
- System also includes charger base holder and Cordura® holster
- Third party holsters available (see page 35)



Yellow



Black



CAT NO. 8030

CAT NO. 8040

**M8 8030**

**CAT NO. 8030**

- Tested lumen value 25.0
- Precision aluminum, Xenon fired lamp module
- 3 C alkaline batteries
- 5-6 hrs battery burn time
- Push button switch
- Light weight body made of Xenoy® with hi-impact polycarbonate lens and Polymer Resin w/ Xenoy chemical resistant shroud
- Water resistant
- Approvals: **UL** – Class I; Div 2; Groups D, T3; Class I, Div 2, Gps ABCD T3; Class II, Div 2, Group G; **FM** – Class I, Div 2; Group ABCD, T3C; Class II, III, Div 2, Gps FG T4 ; **AUS** – Ex ia s IIB T3 IP50; **ATEX** – II 3 G EEx nL IIC T3
- Sure-grip vinyl sheath resists chemicals and extreme temperatures
- Polarity guard tray included
- O-ring sealed
- Third party holsters available (see page 35)



**M10 8040**

**CAT NO. 8040**

- Tested lumen value 72.0
- Precision aluminum, Xenon fired lamp module
- 4 C alkaline batteries
- 7.7 hrs battery burn time
- Push button switch
- Light weight body made of Xenoy® with hi-impact polycarbonate lens
- Water resistant
- Approvals: **UL** – Class I; Div 2; Groups D, T3; **FM** – Class I; Div 2; Groups ABCD, T3A; Class II, III; Div 2 Groups FG, T4; **ATEX** – II 3 G EEx nL IIC T3; **CSA** – Class I, II, III; Div 2; Groups ABCD/FG, T3C; **AUS** – Ex ia s IIB T3 IP50; **MSHA** – 10C – 649 – 0
- Sure-grip vinyl sheath resists chemicals and extreme temperatures
- Polarity guard tray included
- O-ring sealed
- Optional Cordura® holster available (see page 35)
- Third party holsters available (see page 35)



# > BLACK KNIGHT SERIES™



## CORDURA® HOLSTERS

For use with all Black Knight™ Series flashlights.  
(See page 35 for sizing chart)

## TRAFFIC WANDS

Quickly and snugly fit on shroud of lights.  
For use with M6, M8, M9, M10, M11, and M12  
Black Knight™ Series flashlights.

## BANK CHARGER

Available in Fast or Trickle version.  
For use with M9, M11 or M12 Black Knight™  
Series flashlights.





CAT NO. 8050

CAT NO. 8150

**M11 RECHARGEABLE 8050**

**CAT NO. 8050**

- Tested lumen value 151.0
- Precision aluminum, Xenon fired lamp module
- Rechargeable 4 C Nicad Stick (included)
- 1.6 hrs battery burn time
- Push button switch
- Light weight body and shroud made of Xenoy® with high temperature nylon lens
- Water resistant
- Approvals: **ATEX** - II 3 G EE x nL IIC T3 ▪ O-ring sealed
- Available with fast or trickle charger
- Sure-grip vinyl sheath resists chemicals and extreme temperatures
- System also includes low profile charger base holder and 110V transformer
- Optional Cordura® holster (see page 34)
- Third party holsters available (see page 35)



**ALUMINUM**

**M12 RECHARGEABLE 8150**

**CAT NO. 8150**

- Tested lumen value 151.0
- Precision aluminum, Xenon fired lamp module
- Rechargeable 4 C Nicad Stick (included)
- 1.6 hrs battery burn time
- Push button switch
- Durable cast aluminum body
- Water resistant
- O-ring sealed
- Fits M11 charger
- Sure-grip vinyl sheath resists chemicals and extreme temperatures
- System also includes low profile fast charger base holder and 110V transformer
- Optional Cordura® holster (see page 35)
- Third party holsters available (see page 35)



# > LED LIGHTS



CAT NO. 1830



CAT NO. 1930

## L4 1830 LED



## CAT NO. 1830

- Tested lumen value 8.0
- 5 mm Nichia white LED
- 3 AAAA (quad-A) batteries
- 50 hrs battery burn time
- Handy push button tail cap on/off switch
- Tough light weight body made of indestructible Xenoy®
- Approvals: Pending
- Sleek organic design for easy operation
- Momentary “blink” or constant “on” mode
- Pocket clip for easy attachment



Yellow



Black

## L1 1930 LED

## CAT NO. 1930

- Tested lumen value 8.9
- 5 mm Nichia white LED
- 4 LR44 1.5V alkaline coin cells (included)
- 130 hrs battery burn time
- End switch for momentary “blink” or constant “on” modes
- Water resistant
- Approvals: **UL** – Class I; Div 1; Groups ABCD (INTRINSICALLY SAFE); **AUS** – Ex ia IIC T4 IP65
- Concentrated close-quarter beam
- Breakaway safety neck lanyard
- Pocket clip for easy attachment
- Red and Blue night vision disks included



Yellow



Black



CAT NO. 2130

CAT NO. 1990

**MINI FLASHER™ 2130 LED  CAT NO. 2130**

- Tested lumen value 4.7
- LED lamp module
- 2 L1154 coin cell batteries (included)
- 130 hrs battery burn time
- Twist on/off shroud
- Tough polycarbonate body/lens
- Submersible to 500 feet
- Approvals: **ATEX** - II 3 G EEx nL IIC T6
- LED pulses at a frequency of two pulses per second
- LED lamp never needs replacement



**MITYLITE™ 1990 LED CAT NO. 1990**

- Tested lumen value 4.0
- Vacuum metallized reflector, 5 mm Nichia white LED
- 3 N-cell alkaline (included)
- 150 hrs battery burn time
- Tail button switch
- Chemically resistant Xenoy® polymer construction
- Water resistant
- Approvals: **UL** - Class 1, Div 1, Grp: A,B,C, D, T5; **ATEX** - II 3 G EEx nL IIC T5
- Momentary "blink" or constant "on" modes



# > LED LIGHTS



CAT NO. 2330

CAT NO. 2220

CAT NO. 2390

## M6 2330 LED

## CAT NO. 2330

- Tested lumen value 41.0
- 1 watt Luxeon LED beam
- 2 CR123 lithium cells (included)
- 40 hrs battery burn time
- Tail switch provides constant on/off or momentary action
- CNC-machined from solid high grade aluminum with a no-slip knurled diamond pattern
- Water resistant
- Cordura® holster included
- Weapon mount available (see page 34)

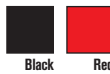


Black

## VB3 2220 LED

## CAT NO. 2220

- Tested lumen value 5.5
- Two 5 mm Nichia white LEDs
- 2 CR2032 3V Lithium coin cells (included)
- 100 hrs battery burn time
- Head flips up to activate LEDs and rotates 180° for aiming light where you need it
- Body made of virtually indestructible Xylex®
- Approvals: **UL** - Class 1, Div 1, Grp: A,B,C,D T6; **ATEX** - II 2 G EEx ib IIC T6
- Multiple use built-in clip
- Head pivots to a full 180°
- Attaches to surfaces up to 1/2" thick



Orange

Blue

Yellow



Convenient clip fits on hats or shirt pockets.

## M6 2390 LED



## CAT NO. 2390

- Tested lumen value 60
- 3 watt Luxeon LED beam
- 2 CR123 lithium cells (included)
- 4.5 hrs battery burn time
- Tail switch provides constant on/off or momentary action
- CNC-machined from solid high grade aluminum with a no-slip knurled diamond pattern
- Water resistant
- Cordura® holster included
- Weapon mount available (see page 34)



Type III hard anodized OD green

# > INCANDESCENT LIGHTS



## M1 3310 **NEW** CAT NO. 3310

- Tested lumen value 30
- Xenon lamp module
- 1 CR123 lithium cell (included)
- 1.25 hr battery burn time
- Tail switch provides constant on/off or momentary action
- CNC-machined from solid high grade aluminum with a no-slip knurled diamond pattern
- Weapon mount available (see page 34)
- Cordura® holster included
- Available late 05



## M1 2310 LED **NEW** CAT NO. 2310

- 1 watt LED version of above
- Side switch



## M3 3370 **NEW** CAT NO. 3370

- Tested lumen value 140
- Xenon lamp module
- 3 CR123 lithium cells (included)
- 1.5 hrs battery burn time
- Tail switch provides constant on/off or momentary action
- CNC-machined from solid high grade aluminum with a no-slip knurled diamond pattern
- Cordura® holster included
- Weapon mount available (see page 34)
- Available late 05



## M3 2370 LED **NEW** CAT NO. 2370

- 3 watt LED version or above
- Side switch



## WEAPON MOUNTS

The **610 Front Sight** and the **620 Side Sling** let you mount your light to either side without sight interference. The **630 Foregrip** attaches underneath the handguard with picatinny rail included. Each system comes complete with hardware for quick installation and a 6-inch remote pressure switch. See page 34 for details.



# > LED LIGHTS



CAT NO. 2620

CAT NO. 2610

CAT NO. 2630

## HEADSUP LITE™ 2610 LED CAT NO. 2610

- Tested lumen value 3.0(Low) 9.0(Hi)
- Dual mode LED headlight-1 LED (Low) or 3 LEDs (Hi)
- 3 AAA alkaline batteries (included)
- 150 hrs (Low) and 80 hrs (Hi) battery burn time
- Push button switch
- Rugged ABS body
- Water resistant
- Approvals: **UL** – Class I; Div 1; Group D, T1 (INTRINSICALLY SAFE); **ATEX** – II 2G EEx ia IIB T4
- Rubber strap and cloth strap included



Rubber



Cloth

## HEADSUP LITE™ 2620 CAT NO. 2620

- Tested lumen value 9.0(Low) 14.0(Hi)
- Dual mode beams - 3 LEDs (Low) or 1 Xenon lamp (Hi)
- 3 AAA alkaline batteries(included)
- 80 hrs / 2-3 hrs battery burn time
- Push button low/hi on/off switch
- Rugged ABS body and shroud
- Water resistant
- Approvals: **UL** – Class I; Div 2; Group D, T3C; Class 1, Div 2, Groups ABCD; **ATEX** – II G 3G EEx nL IIC T3X
- Multi angle pivoting head
- Rubber strap and cloth strap included



Rubber



Cloth

## HEADSUP LITE™ 2630 LED CAT NO.2630

- Tested lumen value 7.0 (Low)/ 15 (Med)/ 30 (Hi)
- 1 watt Luxeon side emitter LED
- 3 AA alkaline batteries (included)
- 24 hrs / 10 hrs / 3 hrs battery burn time
- Constant on/off push button with low / med / hi power levels, and a flashing mode of operation
- Rugged ABS shroud
- Approvals: **UL** & **ATEX** – Pending
- Flashing mode for emergencies
- Hi-tech battery gauge
- Rubber strap and cloth strap included



Rubber



Cloth



**HEADSUP LITE™ 2640 CAT NO. 2640**

- Tested lumen value 9.0(Low) 21.0(Hi)
- Dual mode beams - 3 LEDs (Low) or 1 Xenon lamp (Hi)
- 4 AA alkaline batteries (included)
- 50 hrs / 3 hrs battery burn time
- Hi / Low side switch
- Rugged ABS body
- Water resistant
- Approvals: **UL** - Class I; Div 2; Group ABCD, T3; **ATEX** - IIG 3G EEx nL IIC T3X
- Pivoting head and focusable light beam
- Rubber strap and cloth strap included



Rubber



Cloth

**HEADSUP LITE™ 2660 CAT NO. 2660**

- Same specifications as HeadsUp Lite 2640 except:
- Tested lumen value 9.0(Low) 44.0(Hi)
  - Extended duty 4D Battery Pack included
  - 400 hrs / 15 hrs battery burn time
  - 4 D alkaline batteries (not included)
  - Approvals: **ATEX** - IIG 3G EEx nL IIC T3X



Rubber



Cloth

# > RECOIL LED LIGHTS



CAT NO. 2020

CAT NO. 2010

## SABRELITE™ 2010

### RECOIL LED™

CAT NO. 2010

- Tested lumen value 32.0
- 1 Watt Luxeon Lambertion LED using Recoil LED Technology™
- 3 C batteries (included)
- 50 hrs battery burn time
- Twist on/off shroud
- Rugged ABS body
- Submersible to 500 feet
- Approvals: **UL** – Pending; **ATEX** – II 3 GD Eex nL IIC T4 T135°



## SABRELITE™ 2020

### RECOIL LED™

CAT NO. 2020


- Tested lumen value 35.0
- 1 Watt Luxeon Lambertion LED using Recoil LED Technology™
- 3 C batteries (not included)
- 6 hrs battery burn time
- Twist on/off lens shroud
- Rugged ABS body/shroud with polycarbonate lens
- Water resistant
- Approvals: **UL** – Class 1; Div 1; Group C,D, T3A; Class II, Div 1, Group F, G; **ATEX** – II3 GD EEx nL IIC T5
- O-ring sealed with a twist-on shroud
- Polarity battery guard tray included





CAT NO. 2410

CAT NO. 2460

**STEALTHLITE™ 2410  
RECOIL LED™  CAT NO. 2410**

- Tested lumen value 32.0
- 1 Watt Luxeon Lambertion LED using Recoil LED Technology™
- 4 AA batteries (included)
- 32 hrs battery burn time
- One-handed safety switch operation
- Rugged ABS body with nylon lens
- Submersible to 500 feet
- Approvals: **UL** – Pending; **ATEX** – II 3 GD EEx nL IIC T4 T135°



**STEALTHLITE™ RECHARGEABLE  
2460 RECOIL LED™  CAT NO. 2460**

Same specifications as Stealthlite 2410 except:

- Tested lumen value 28.0
- Rugged ABS body with polycarbonate lens
- StealthLite™ Recoil™ Rechargeable System includes drop-in Smart Charger base with 110V charger hi-capacity industrial NiMH battery pack
- Approvals: **UL** – Pending; **ATEX** – II 3 GD EEx nL IIC T4 T135°



Direct Wiring Rig  
CAT. NO. 6061F



NiMH Battery Pack  
CAT. NO. 2469



12V Plug-in Charger  
CAT. NO. 8056F



110V Transformer  
CAT. NO. 2467

# > RECOIL LED LIGHTS



CAT NO. 3610

CAT NO. 3660

## LITTLE ED™ 3610

RECOIL LED™

CAT NO. 3610

- Tested lumen value 32.0
- 1 Watt Luxeon Lambertion LED using Recoil LED Technology™
- 4 AA alkaline batteries (included)
- 32 hrs battery burn time
- One-handed safety switch operation
- Rugged ABS body with polycarbonate lens
- Water resistant
- Approvals: **UL** – Pending; **ATEX** – II 3 GD EEx nL IIC T4 T135°
- Powerful right angle flashlight
- Stainless steel clip and key ring for hands-free operation



Yellow

Black

## LITTLE ED™ RECHARGEABLE

3660 RECOIL LED™

CAT NO. 3660

Same specifications as Little Ed™ 3610 Recoil LED™ except:

- Tested lumen value 28.0
- Drop-in Smart Charger base with 110V charger hi-capacity industrial NiMH battery pack
- Approvals: **UL** – Pending; **ATEX** – II 3 GD EEx nL IIC T4 T135°



Direct Wiring Rig  
CAT. NO. 6061F



NiMH Battery Pack  
CAT. NO. 2469



12V Plug-in Charger  
CAT. NO. 8056F



110V Transformer  
CAT. NO. 2467



CAT NO. 2680

CAT NO. 8020

### HEADSUP LITE™ 2680

#### RECOIL LED™

CAT NO. 2680

- Tested lumen value 33.0
- 1 Watt Luxeon Lambertion using Recoil LED Technology™
- 4 AA alkaline batteries (included)
- 33 hrs battery burn time
- On/off side switch
- Rugged ABS body
- Submersible to 500 feet
- Approvals: **UL** – Pending; **FM** – Class 1, Div 2, Grp, ABCD; Class II, III, Div 2 Grp F, G Temp T4A; **ATEX** – II 3 GD EEx nL IIC T4 T135°
- Rubber strap and cloth strap included



Black



Rubber



Cloth

### M8 8020 RECOIL LED™

CAT NO. 8020

- Tested lumen value 35.0
- 1 Watt Luxeon Lambertion using Recoil LED Technology™
- 3 C batteries (not included)
- 6 hrs battery burn time
- Push button switch
- Body made of Xenoy® with polycarbonate lens and ABS shroud
- Water resistant
- Approvals: **UL** – Class 1; Div 1; Group C,D, T3A; **ATEX** – II 3 G EEx nL IIC T5
- Sure-grip vinyl sheath resists chemicals and extreme temperatures
- O-ring sealed with a twist-on shroud
- Polarity battery guard tray included



Yellow



Black

# > SPECIALTY LIGHTS

CAT NO. 3600

CAT NO. 3650

CAT NO. 3700

## LITTLE ED™ 3600 CAT NO. 3600

- Tested lumen value 25.0
- Precision aluminum, Xenon fired lamp module
- 4 AA Alkaline batteries (not included)
- 4 hrs battery burn time
- One-handed safety switch operation
- Rugged ABS body with polycarbonate lens
- Water resistant
- Approvals: **UL** – Class 1, Div 2, Group D; Class 1, Zone 2, Group IIA T3; **ATEX** – II 3 GD EEx nL IIC T5
- Powerful right angle flashlight
- Stainless steel clip and key ring for hands-free operation



## LITTLE ED™ RECHARGEABLE 3650 CAT NO. 3650

- Same specifications as Little Ed™ 3600 except:
- Tested lumen value 28.0
  - Drop-in Smart Charger base with 110V charger hi-capacity industrial NiMH battery pack
  - Approvals: **UL** – Class 1, Div 2, Group D; **ATEX** – II 3 GD EEx nL IIC T5



Direct Wiring Rig  
CAT. NO. 6061F



NiMH Battery Pack  
CAT. NO. 2469



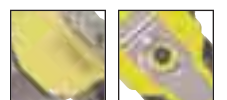
12V Plug-in Charger  
CAT. NO. 8056F



110V Transformer  
CAT. NO. 2467

## BIG ED™ 3700 CAT NO. 3700

- Tested lumen value 48.0
- PR based Xenon gas (primary) and Krypton gas (back-up) filled lamp modules
- 4 C Alkaline batteries (not included)
- 3.5 hrs battery burn time
- Rugged ABS body
- Momentary on/off switch
- Water resistant
- Approvals: **UL** – Class I; Div 2; Groups ABCD, T2B; **ATEX** – II 3 G EEx nL IIC T4
- Emergency spare lamp included
- Stainless steel clip and ring for versatile attachment
- Push button quick change battery ejection system





CAT NO. 3800

CAT NO. 3850

CAT NO. 3750

**BIG ED™ RECHARGEABLE  
3750 CAT NO. 3750**

- Same specifications as Big Ed™ 3700 except:
- Tested lumen value 72.0
  - Heavy duty Nicad rechargeable battery pack
  - Charger base available in fast and trickle charging bays
  - Approvals: **UL** – Class I; Div 2; Groups ABCD, T2B; **ATEX** – II 3 G EEx nL IIC T2A

**BIG D™ 3800**

- Tested lumen value 200
- PR based, Xenon fired lamp module
- 6 D Alkaline batteries
- 6 hrs (primary) and 12 hrs (flasher) battery burn time
- Push button switch
- Rugged ABS body with polycarbonate lens
- Water resistant
- Approvals: **UL** – Class 1, Div 2; Grps C,D T2; **ATEX** – APPROVAL PENDING
- Rotating head for multi-position lighting
- Dual mode operation: constant on and emergency strobe
- Quick Change power pack
- Optional mounting bracket has the same footprint as the Streamlight® LiteBox®
- Includes backup lamp and strong nylon shoulder strap

**CAT NO. 3800**



**BIG D™ RECHARGEABLE  
3850 CAT NO. 3850**

- Same specifications as Big D™ 3800 except:
- Tested lumen value 610
  - 6 D Nicad or 6V Lead Acid Rechargeable Battery Pack
  - 1.25 hrs (primary) and 2.5 hrs (flasher) Nicad battery burn time
  - 1 hr (primary) and 2 hrs (flasher) Lead Acid battery burn time
  - Mounting bracket is not available
  - Optional charger base has the same footprint as the Streamlight® LiteBox®
  - Approvals: **UL** – Class 1, Div 2, Group D, T1; **ATEX** – APPROVAL PENDING



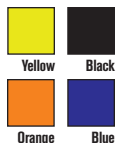
# > HEAVY DUTY LIGHTS



## KINGLITE™ 4000

## CAT NO. 4000

- Tested lumen value 251.4
- Exclusive dual filament Xenon back-up safety lamp with 60 hours of total lamp life
- 8 D Alkaline batteries (not included)
- 10-12 hrs battery burn time
- Locking dual switch
- Rugged ABS housing with polycarbonate lens and thermoplastic rubber shroud
- Water resistant
- Approvals: **FM** – Class I; Div 2; Group CD, T1; 2; Group ABCD, T3C; Class II; Div 2; Group G
- Shock absorbing internal battery module
- Multiple position handle converts from lantern to pistol grip
- Optional Wall Mount **CAT. NO. 4006**



Lantern grip also works reversed or converted to pistol grip

## LASER PRO™ 6000

## CAT NO. 6000

- Tested lumen value 125.7
- Exclusive dual filament Xenon back-up safety lamp with 60 hours of total lamp life
- 4 D Alkaline batteries (not included)
- 10-12 hrs battery burn time
- Double switch
- Rugged ABS housing with polycarbonate lens and thermoplastic rubber shroud
- Approvals: **FM** – Class I; Div 2, Group ABCD, T2A; **CSA** – Class I; Div 2; Group ABCD, T3C; Class II; Div 2; Group G; **ATEX** – II 3 GD EEx nL IIC T2 300°C
- Shock absorbing internal battery module
- Adjustable fold-away stand
- Industrial/professional quality multi-use spotlight
- Multiple position handle converts from lantern to pistol grip



Lantern grip also works reversed or converted to pistol grip

CRTG 5.56MM



**CAT NO. 6050**

**M13 RECHARGEABLE 6050**

**CAT NO. 6050**

Same features as the LaserPro™ 6000 except:

- Tested lumen value 165.0
- 7 C Nicad rechargeable battery pack
- 2 hrs battery burn time
- System includes desk/dash wall mount base, 110V transformer, and hi-capacity rechargeable battery pack



**12V Plug-in  
Charger  
CAT. NO. 8056F**



**Direct  
Wiring Rig  
CAT. NO. 6061F**



**110V  
Transformer  
CAT. NO. 6057F**

# > PRIMARY DIVE LIGHTS

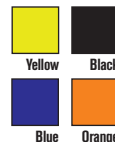


CAT NO. 4100

## AQUA KINGLITE™ 4100


CAT NO. 4100

- Tested lumen value 251.4
- Dual filament Xenon back-up safety lamp with 60 hours total lamp life
- 8 D Alkaline batteries (not included)
- 10-12 hrs battery burn time
- Locking dual switch
- Submersible to 500 feet
- Rugged ABS housing with polycarbonate lens and thermoplastic rubber shroud
- Shock absorbing internal battery module
- Multiple position handle converts from lantern to pistol grip



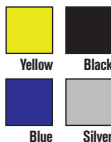
Lantern grip also works reversed or converted to pistol grip




**NEMO™ 4200** 

**CAT NO. 4200**

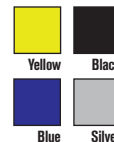
- Tested lumen value 112.0
- PR based, Halogen fired lamp module
- 4 C Alkaline Batteries (not included)
- 3.5 hrs battery burn time
- Easy on/off magnetic switch
- Rugged ABS body and polycarbonate lens with over-molded thermoplastic accents
- Submersible to 500 feet
- Smallest and brightest 4C dive light in the world
- Exterior electronic "leak proof" switch
- Spare lamp included
- Optional personalized nameplate



**NEMO™ 4300** 

**CAT NO. 4300**

- Tested lumen value 276.0
- PR based, Xenon fired lamp module
- 8 C Alkaline Batteries (not included)
- 3.5 hrs battery burn time
- Easy on/off magnetic switch
- Rugged ABS body and polycarbonate lens with over-molded thermoplastic accents
- Submersible to 500 feet
- Smallest and brightest 8C dive light in the world
- Exterior electronic "leak proof" switch
- Spare lamp included
- Optional personalized nameplate

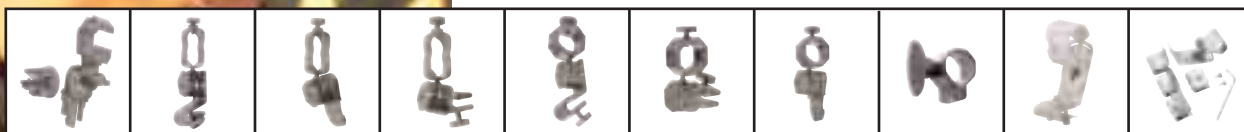


# > HELMET LIGHT HOLDERS



## UNIVERSAL STAINLESS STEEL HELMET LIGHT HOLDER KIT CAT NO. 760

Clamps on rims of helmets and hard hats. Allows angle of lights to avoid goggles and faceplates. Includes 4 angle rims and 2 hard hat attachments plus 1 flashlight mounting bracket and screws. Fits MityLite™ 2AA, StealthLite™ and StealthLite™ Rechargeable.



HELMET LITE HOLDER CAT NO.	700	710	711	712	720	721	722	730	750	760
MityLite 2AAA					•	•	•			
L1 LED/L1 LED Infrared								•		
VersaBrite/VersaBrite II	•	•	•	•					•	•
Tracker					•	•	•			
StealthLite/StealthLite Rech.	•	•	•	•					•	•
MityLite 2AA/MityLite Plus 2AA					•	•	•		•	•
MityLite 4AA	•	•	•	•					•	•

# > WEAPON MOUNTS

Our tactical pressure switch replaces the standard tailcap on the flashlight with a 6" cord attached to a 2" pressure-sensitive switch that mounts to the foregrip.



## AR15 | M16 | M4 CARBINE FOREGRIP MOUNT CAT NO. 630

- Mounting Kit Includes:
  - mounting hardware
  - pressure switch
  - Velcro® wrap
  - picatinny rail mount
  - rubber strap
  - alcohol swabs
- Holds M1, M3 & M6 lights
- Quick Release Picatinny Rail Mount
- 8" Remote Pressure Switch
- Light sold separately



## AR15 | M16 | M4 CARBINE SIDE SLING MOUNT CAT NO. 620

- Mounting Kit Includes:
  - mounting hardware
  - pressure switch
  - Velcro® wrap
  - alcohol swabs
- Holds M1, M3 & M6 lights
- 8" Remote Pressure Switch
- Light sold separately





## HECKLER | KOCH MP5 FRONT SITE MOUNT CAT NO. 610

- Mounting Kit Includes:
  - mounting hardware
  - pressure switch
  - Velcro® wrap
  - alcohol swabs
- Holds M1, M3 & M6 lights
- 8" Remote Pressure Switch
- Light sold separately



## PELICAN'S CORDURA® HOLSTERS

PELICAN'S CORDURA® HOLSTERS							
							
	CAT. NO. 2407	CAT. NO. 2327	CAT. NO. 2307	CAT. NO. 7057	CAT. NO. 8057	CALL FOR CAT. NO.	CALL FOR CAT. NO.
LIGHT	STEALTHLITE™ 2400	M6 2320	MITYLITE™ 2300	M9 7050	M8 8020 RECOIL LED™	M1 2310 LED	M3 2370 LED
	STEALTHLITE™ 2450	M6 2330 LED	MITYLITE™ 2340		M8 8030	M1 3310	M3 3370
	STEALTHLITE™ 2410				M10 8040		
					M11 8050		
				M12 8150			

## THIRD PARTY HOLSTERS

	K-FORCE WEATHERPROOF POLYMER			PHOENIX NYLON
	PLAIN BLACK	BLACK WEAVE	HI-GLOSS	PHOENIX NYLON
M6	K672-6BS	K672-6WBS	K672-6CLBS	X672-6
M8   M10   M11	K675-8BS	K675-8WBS	K675-8CLBS	X675-8
M9	K674-9BS	K674-9WBS	K674-9CLBS	X675-9

For inquiry on third party holsters please contact Gould & Goodrich™ Phone: 910.893.2071 or 800.277.0732 Website: www.GouldUsa.com Email: info@GouldUsa.com.

## > PRIVATE LABEL PROGRAM



MityLite™ 2430 with custom logo



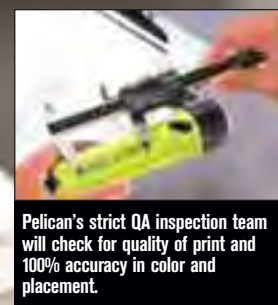
Pelican Products offers the ultimate in private labeling. You can put your company name and logo or a special statement on any Pelican light. Our in-house private label molding and production department has complete short and long run capabilities for a variety of custom applications and custom colors. We have the latest hot stamping equipment, utilizing the world's most durable epoxy inks and foils in our screening, hot tipping, embossing, and molding programs.



Our in-house graphics studio will take your logo (or design one for you) and size it appropriately to the flashlight of your choice.



Our hot stamping department, equipped with the latest technology in custom imprinting, will do short and long runs.



Pelican's strict QA inspection team will check for quality of print and 100% accuracy in color and placement.

# > LIGHT SPECIFICATIONS

CAT. NO.	MODEL NAME	LIGHT SOURCE	BATTERIES	TESTED LUMEN VALUE	WATTS	BATTERY BURN TIME	APPROVALS	LENGTH	WEIGHT WITH BATTERIES	COLORS
1800	PeliLite™ 1800	Xenon	2 C Alkaline (NOT INCLUDED)	15.0	2.22	75 hrs.		6" 15.24 cm	7.8 oz. 0.104 kg	
1820	Pocket Sabre™ 1820	Xenon	2 C Alkaline (INCLUDED ON SELECT PACKAGING)	15.0	2.22	75 hrs.		5 9/16" 14.76 cm	8.3 oz. 0.263 kg	
1830	L4 1830 LED	LED	3 AAAA Alkaline (INCLUDED)	8.0	.675	50.0 hrs.	Pending	6 1/8" 16.51 cm	1.2 oz. 0.034 kg	
1900	MityLite™ 1900	Xenon	2 AAA Alkaline (INCLUDED)	7.0	1.11	2.0 hrs.		4 3/4" 10.35 cm	1.6 oz. 0.07 kg	
1930	L1 1930 LED	LED	4 LR44 1.5 V Alkaline Coin Cells (INCLUDED)	8.9	0.18	130.0 hrs.		2 1/2" 5.23 cm	0.8 oz. 0.025 kg	
1990	MityLite™ 1990 LED	LED	3 N Alkaline (INCLUDED)	4.0	0.675	150.0 hrs.		5" 17.2 cm	1.92 oz. 0.054 kg	
2000	SabreLite™ 2000	Xenon	3 C Alkaline (NOT INCLUDED)	33.0	3.33	4-5 hrs.		7 9/16" 19.83 cm	12.8 oz. 0.187 kg	
2010	SabreLite™ 2010 Recoil LED™	Recoil LED™	3 C Alkaline (NOT INCLUDED)	32	1.0	50.0 hrs.		8.1" 20.57 cm	13.4 oz. 0.198 kg	
2020	SabreLite™ 2020 Recoil LED™	Recoil LED™	3C Alkaline (NOT INCLUDED)	35.0	1.0	6.0 hrs.		8 1/2" 22.22 cm	14.7 oz. 0.416 kg	
2130	Mini Flasher™ 2130 LED	LED	2 LR1154 1.2 V Coin Alkaline (INCLUDED)	4.7	0.48	130.0 hrs		1 3/4" 4.44 cm	1.09 oz. 0.03 kg	
2140	Tracker™ 2140	Xenon	2 AAA Alkaline (INCLUDED)	8.0	1.20	2.5 hrs.		3 1/2" 8.89 cm	1.68 oz. 0.072 kg	
2220	VB3 2220 LED	LED	2 CR2032 3V Lithium Coin Cells (INCLUDED)	5.5	0.6	100.0 hrs		3 1/2" 8.89 cm	1.7 oz. 0.048 kg	
2250	VersaBrite™ 2250	Xenon	2 AA Alkaline (INCLUDED)	7.0	1.8	5.0-6.0 hrs.		3 3/8" 9.82 cm	3.0 oz. 0.127 kg	
2270	VersaBrite™ 2270	Xenon	2 AA Alkaline (INCLUDED)	8.0	1.8	4.5 hrs.		4 3/16" 10.61 cm	4 oz. 0.113 kg	
2300	MityLite™ 2300	Xenon	2 AA Alkaline (INCLUDED)	8.0	1.8	4.2 hrs		5 1/8" 14.27 cm	3.4 oz. 0.121 kg	
2310	M1 2310 LED	LED	1 CR123 Lithium (INCLUDED)	26.0	1.0	3.0 hr.	N/A	4 3/4" 12.07 cm	3.84 oz. 0.108 kg	
2320	M6 2320	Xenon	2 CR123 Lithium (INCLUDED)	74.0	7.8	1.0 hr.	N/A	5 1/2" 13.97 cm	10 oz. 0.283 kg	
2330	M6 2330 LED	LED	2 CR123 Lithium (INCLUDED)	41.0	1.0	40.0 hrs.	N/A	5 1/2" 13.97 cm	9.7 oz. 0.247 kg	
2340	MityLite™ 2340	Xenon	2 AA Alkaline (INCLUDED ON SELECT PACKAGING)	8.0	1.8	4.2 hrs.		6 1/4" 15.87 cm	3.5 oz. 0.12 kg	
2370	M3 2370 LED	LED	3 CR123 Lithium (INCLUDED)	56	3.0	6.7 hr.	N/A	7 1/2" 19.05 cm	7.04 oz. 0.201 kg	
2390	M6 2390 LED 3W	LED	2 CR123 Lithium (INCLUDED)	61	3.0	4.5 hrs.	N/A	5 9/16" 13.49 cm	10.0 oz. 0.159 kg	
2400	StealthLite™ 2400	Xenon	4 AA Alkaline (INCLUDED ON SELECT PACKAGING)	25	3.18	4.0 hrs.		6 1/2" 16.51 cm	7.1 oz. 0.235 kg	
2410	StealthLite™ 2410 Recoil LED™	Recoil LED™	4AA Alkaline (INCLUDED)	32.0	1.0	32.0 hrs.		7" 17.78 cm	7.3 oz. 0.243 kg	
2420	MityLite™ 2420	Xenon	4 AA Alkaline (INCLUDED)	31.5	3.66	3.5 hrs.		6" 15.24 cm	5.9 oz. 0.232 kg	
2430	MityLite™ 2430	Xenon	4 AA Alkaline (INCLUDED)	32	3.66	3.5 hrs.		6 1/2" 16.51 cm	6.1 oz. 0.147 kg	
2450	StealthLite™ Rechargeable 2450	Xenon	NIMH Battery Pack (INCLUDED)	28	2.64	3.5 hrs.		6 1/2" 16.51 cm	7.8 oz. 0.178 kg	
2460	StealthLite™ Rechargeable 2460 Recoil LED™	Recoil LED™	NIMH Battery Pack (INCLUDED)	28.0	1.0	32.2 hrs.	Pending	7" 17.78 cm	7.8 oz. 0.181 kg	
2600	HeadsUp Lite™ 2600	Krypton	4 AA Alkaline (INCLUDED)	25	4.5 (PRIMARY) 3.0 (BACK-UP)	2-3 hrs. (PRIMARY) 4-5 hrs. (BACK-UP)		3 9/16" 9.67 cm	9.7 oz. 0.426 kg	

CAT. NO.	MODEL NAME	LIGHT SOURCE	BATTERIES	TESTED LUMEN VALUE	WATTS	BATTERY BURN TIME	APPROVALS	LENGTH	WEIGHT WITH BATTERIES	COLORS
2610	HeadsUp Lite™ 2610 LED	LED	3 AAA Alkaline (INCLUDED)	3.0 (LOW) 9.0 (HI)	0.135 (PRIMARY) 0.405 (HI)	150.0 hrs. (PRIMARY) 80.0 hrs. (BACK-UP)		1 1/2" 3.81 cm	3.2 oz. 0.181 kg	
2620	HeadsUp Lite™ 2620	Xenon (LOW) LED (HI)	3 AAA Alkaline (INCLUDED)	9.0 (LOW) 14.0 (HI)	0.405 (LOW) 1.53 (HI)	80 hrs. (LOW) 2-3 hrs. (HI)		1 1/2" 14.76 cm	4.9 oz. 0.139 kg	
2630	HeadsUp Lite™ 2630 LED	LED	3 AA Alkaline (INCLUDED)	7.0 (LOW) 15 (MED) 30 (HI)	1.0 1.0 1.0	24 hrs. (LOW) 10 hrs. (MED) 3 hrs. (HI)	Pending	N/A	6.8 oz. 0.362 kg	
2640	HeadsUp Lite™ 2640	Halogen (LOW) LED (HI)	4 AA Alkaline (INCLUDED)	9.0 (LOW) 21.0 (HI)	0.54 (LOW) 3.48 (HI)	50 hrs. (LOW) 3 hrs. (HI)		2 3/8" 6.65 cm	10.9 oz. 0.433 kg	
2660	HeadsUp Lite™ 2660	Halogen (LOW) LED (HI)	4 D Alkaline (NOT INCLUDED)	9.0 (LOW) 44.0 (HI)	0.54 (LOW) 5.76 (HI)	400 hrs. (LOW) 15 hrs. (HI)		2 3/8" 6.65 cm	14.0 oz. 0.462 kg	
2680	HeadsUp Lite™ 2680 Recoil LED™	Recoil LED™	4 AA Alkaline (INCLUDED)	33.0	1.0	33 hrs.		4 3/8" 11.76 cm	9.3 oz. 0.263 kg	
3310	M1 3310	Xenon	1 CR123 Lithium (INCLUDED)	3.0	3.1	125 hr.	N/A	4 3/8" 12.07 cm	4.3 oz. 0.122 kg	
3370	M3 3370	Xenon	3 CR123 Lithium (INCLUDED)	140	12.6	15 hrs.	N/A	7 1/2" 19.05 cm	7.1 oz. 0.201 kg	
3600	Little Ed™ 3600	Xenon	4 AA Alkaline (NOT INCLUDED)	25.0	3.18	4.0 hrs.		7 1/2" 19.05 cm	10.1 oz. 0.337 kg	
3610	Little Ed™ 3610 Recoil LED™	Recoil LED™	4 AA Alkaline (INCLUDED)	32.0	1.0	32 hrs.		7 1/2" 19.05 cm	10.5 oz. 0.337 kg	
3650	Little Ed™ Rechargeable 3650	Xenon	4 AA NiMH Rechargeable (INCLUDED)	28.0	2.64	1.5 hrs.		7 1/2" 19.05 cm	10.3 oz. 0.716 kg	
3660	Little Ed™ Rechargeable 3660 Recoil LED™	Recoil LED™	NiMH Rechargeable (INCLUDED)	28.0	1.0	32.2 hrs.		7 1/2" 19.05 cm	10.3 oz. 0.3 kg	
3700	Big Ed™ 3700	Xenon (PRIMARY) Krypton (BACK-UP)	4 C Alkaline (NOT INCLUDED)	48.0 (PRIMARY) 18 (BACK-UP)	7.2 (PRIMARY) 4.5 (BACK-UP)	3.5 hrs. (PRIMARY) 4.0 hrs. (BACK-UP)		7" 17.78 cm	1.25 lbs. 0.382 kg	
3750	Big Ed™ Rechargeable 3750	Xenon (PRIMARY) Krypton (BACK-UP)	Nicad Battery Pack (INCLUDED)	72.0 (PRIMARY) 18 (BACK-UP)	8.2 (PRIMARY) 3.6 (BACK-UP)	2.25 hrs. (PRIMARY) 4.5 hrs. (BACK-UP)		7" 17.78 cm	1.25 lbs.. 2.13 kg	
3800	Big D™ 3800	Xenon	6 D Alkaline (NOT INCLUDED)	200	8.0	6.0 hrs. (CONSTANT) 12.0 hrs. (STROBE)		8 1/2" 21.59 cm	3.8 lbs. 1.7 kg	
3850	Big D™ Rechargeable 3850	Xenon (PRIMARY) Krypton (BACK-UP)	6 D Nicad or 6V Lead Acid Rechargeable Battery Pack (INCLUDED)	610 (PRIMARY) Nicad 290 (BACK-UP) Nicad 600 (PRIMARY) Lead Acid 290 (BACK-UP) Lead Acid	24 (PRIMARY) Nicad 11 (BACK-UP) Nicad 24 (PRIMARY) Lead Acid 11 (BACK-UP) Lead Acid	1.25 hr. (PRIMARY) Nicad 2.5 hrs. (BACK-UP) Nicad 1.0 hr. (PRIMARY) Lead Acid 2.0 hrs. (BACK-UP) Lead Acid		8 1/2" 21.59 cm	3.8 lbs. (1.7kg) Nicad 4 lbs. (1.8kg) Lead Acid	
4000	KingLite™ 4000	Xenon	8 D Alkaline (NOT INCLUDED)	251.4	14.4	10-12 hrs.		9 3/8" 23.79 cm	4.63 lbs. 2.1 kg	
4100	Aqua KingLite™ 4100	Xenon	8 D Alkaline (NOT INCLUDED)	251.4	14.4	10-12 hrs.	N/A	9 3/8" 23.79 cm	4.63 lbs. 2.1 kg	
4200	Nemo™ 4200	Halogen	4 C Alkaline (NOT INCLUDED)	112.0	6.9	3.5 hrs	N/A	5 1/8" 13.00 cm	1.46 lb. 0.789 kg	
4300	Nemo™ 4300	Xenon	8 C Alkaline (NOT INCLUDED)	276.0	13.8	3.5 hrs.	N/A	7 1/2" 19.05 cm	2.27 lb. 1.14 kg	
6000	Laser Pro™ 6000	Xenon	4 D Alkaline (NOT INCLUDED)	125.7	7.0	10-12 hrs.		8 3/8" 21.25 cm	2.881 lb. 1.3 kg	
6050	M13 Rechargeable 6050	Xenon	7 C Nicad Rechargeable Battery Pack (INCLUDED)	165.0	9.83	2.0 hrs	N/A	8 3/8" 21.25 cm	3.2 lb. kg	
7050	M9 Rechargeable 7050	Halogen	3 C Nicad Rechargeable Battery Pack (INCLUDED)	122.0	7.84	1.25 hrs.		7 1/4" 18.41 cm	9.28 oz. 0.292 kg	
8020	M8 8020 Recoil LED™	Recoil LED™	3 C Alkaline (NOT INCLUDED)	35.0	1.0	6.0 hrs.		10 1/4" 26.03 cm	1.1 lb. 0.5 kg	
8030	M8 8030	Xenon	3 C Alkaline (NOT INCLUDED)	25.0	3.42	5-6 hrs.		9 5/16" 23.64 cm	9.2 oz. 0.260 kg	
8040	M10 8040	Xenon	4 C Alkaline (NOT INCLUDED)	72.0	4.80	7.7 hrs.		11 1/4" 28.57 cm	1.15 lb. 0.521 kg	
8050	M11 Rechargeable 8050	Xenon	4 C Nicad Rechargeable Battery Pack (INCLUDED)	151.0	9.12	1.6 hrs.		11 1/4" 28.57 cm	1.12 lb. 0.506 kg	
8150	M12 Rechargeable 8150	Xenon	4 C Nicad Rechargeable Battery Pack (INCLUDED)	151.0	9.12	1.6 hrs.	N/A	11 1/4" 28.57 cm	1.57 lb. 0.71 kg	



23215 Early Avenue • Torrance, CA 90505 USA  
Tel 310.326.4700 • 800.473.5422 (Outside CA)  
Fax 310.326.3311 • [www.pelican.com](http://www.pelican.com)

PELICAN PRODUCTS, CANADA  
10221-184th St. • Edmonton, Alberta T5S 2J4  
Tel 780.481.6076 • Fax 780.481.9586  
[www.pelicanproducts.ca](http://www.pelicanproducts.ca)

PELI PRODUCTS, S.A. (Europe)  
c/ Casp, 33-B Pral. • 08010 • Barcelona, Spain  
Tel 34.93.467.4999 • Fax 34.93.487.7393  
[www.peli.com](http://www.peli.com)

PELICAN PRODUCTS K.K.  
Suntec Bldg. 7F • 2-2-7 Honcho, Funabashi-shi  
Chiba 273-0005 Japan  
Tel +81(0)47.433.7715 • Fax +81.(0)47.433.7882  
[www.pelicanproducts.jp](http://www.pelicanproducts.jp)

**THE PELICAN UNCONDITIONAL  
LIFETIME GUARANTEE**

©2005 Pelican Products, Inc. All trademarks and logos displayed herein are registered and unregistered trademarks of Pelican Products, Inc. and others. Cordura is a registered trademark of E.I. du Pont de Nemours and Company. Xenoy and Xylex are registered trademarks of General Electric Company. Streamlight and LiteBox are registered trademarks of Streamlight, Inc. Velcro is a registered trademark of Velcro Industries B.V. Part. No. 0030-000-200 0C/05