

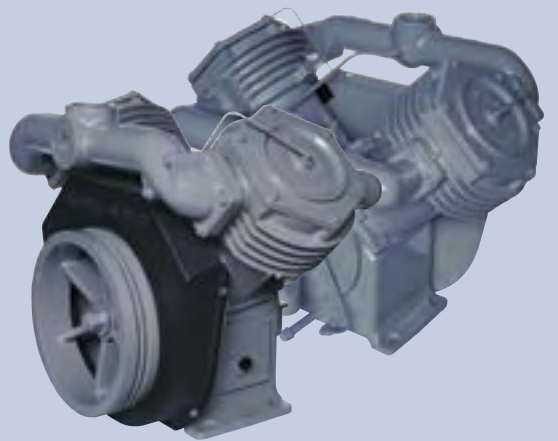
A-SERIES

7.5-40 HORSEPOWER

COMPRESSOR BARES



WHEN COMPRESSED AIR
QUALITY COUNTS.



CHAMPION[®]

A Gardner Denver Product

A-SERIES RECIPROCATING AIR COMPRESSORS

MAJOR APPLICATIONS

- Bulk Material Handling
- Engine Starting
- Mines Air
- Well Head Servicing
- Petroleum Refineries
- Plant Air and Vacuum

The Champion ATLE6 is a single stage, two cylinder, pressure lubricated compressor that is equipped with an SAE#3 bell housing flange for direct engine mounting and remote site operation.

Wherever there's a demand for a low pressure engine driven compressor, the ATLE6 is the compressor for the job. Because it is direct coupled to the engine, there is no need to worry about belts slipping or wearing out. When connected to the engine, all rotating components are totally enclosed and protected from the environment.

The Champion APL and APO are single stage, two cylinder, pressure lubricated compressors equipped with a two-groove, 17 inch sheave for belt driven applications. The APL and APO have an integrated cooling fan built into the cast iron sheave for maximum cooling.

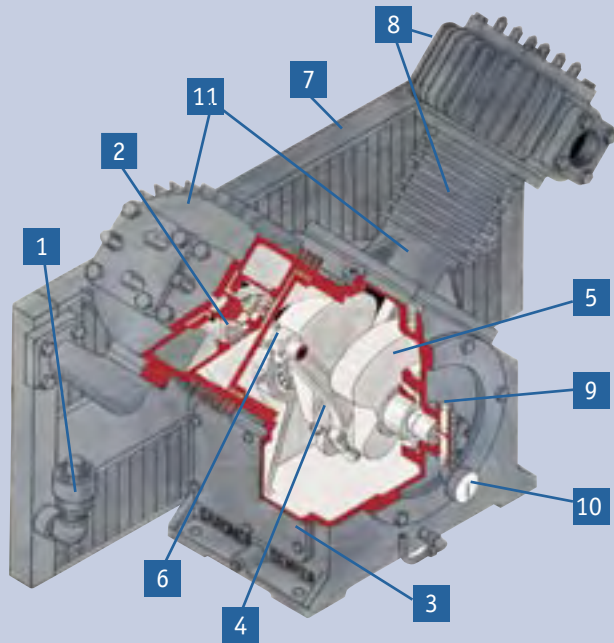
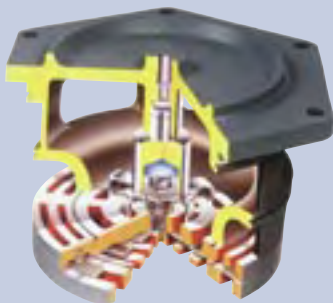
The AVLEK is a single stage vacuum pump, AVLAN is a single stage booster and the AVLAV is a two-stage compressor. All A-Series compressors are designed to provide optimum performance in a wide variety of operations.

LUBRICATION

- Superior lubrication is accomplished through a gear driven oil pump powered by the crankshaft.
- Pressurized system ensures complete lubrication to the crankshaft, connecting rods, bearings and piston pins.
- Full flow, spin-on oil filter ensures impurities are removed before the lubricant contacts any internal components.
- Oil pressure gauge is conveniently mounted to display the oil pump pressure.

VALVES

- Concentric ring design incorporates both the inlet and outlet valves in one assembly.
- Designed to give 100% exposure to the air flow for maximum efficiency (i.e. more CFM per HP).
- Made of AISI 420 stainless steel to give dependable corrosion-free and fatigue-free service life.



PERFORMANCE FEATURES

1. ASME pressure relief valve protects the intercooler and first stage from over pressure.
2. Suction unloading valves provide loadless starting and stopping as well as quick response to capacity demands.
3. Removable hand-hole plate allows easy access to the internal running gear.
4. Tri-Metal insert bearings are two-piece for quick and easy replacement.
5. Counterbalanced crankshaft assures smooth operation.
6. Replaceable piston pin bearings are very economical when replacement becomes necessary.
7. Generously sized intercooler provides maximum cooling for the most efficient operation and low power consumption. (AVLAVCAA-CH only)
8. Deep-finned cylinders and heads quickly dissipate the heat of compression.
9. Crankshaft ends are supported by large tapered roller bearings for smooth operation and long life.
10. Oil pressure gauge assures the operator of lubrication system integrity.
11. The cylinders and crankcases are built of industrial strength cast iron materials.

APLGAA, APLGBA, APLHAA AND APLHBA APOGAA, APOGBA, APOHAA AND APOHBA

28" HG-60 PSIG (0.95-4.1 Bars), Continuous Operation

7.5-30 HP (5.6-22 kW), 5-15 HP (3.75-11.2 kW)

DIMENSIONS

| MODEL | BORE DIAMETER | | STROKE | INLET | DISCHARGE | DIMENSIONS L x W x H | WEIGHT | |
|-------|---------------|-------|--------|-------|-----------|----------------------|--------|-----|
| | in | mm | | | | | lbs | kg |
| APL | in | 7.875 | 3 | 3 | 3 | 41 x 29 x 30 | lbs | 750 |
| | mm | 200 | 76 | 76 | 76 | 1041 x 737 x 762 | kg | 340 |
| APO | in | 7.875 | 4.5 | 3 | 3 | 41 x 29 x 30 | lbs | 750 |
| | mm | 200 | 114 | 76 | 76 | 1041 x 737 x 762 | kg | 340 |

COMPRESSOR SPECIFICATIONS

| MODEL | SPEED HP/KW | PRESSURE | | CAPACITY | |
|-------|----------------|----------|------|----------|---------------------|
| | | PSIG | BARG | CFM | M ³ /MIN |
| APL | 855 15/11.2 | 20 | 1.4 | 113 | 3.2 |
| | | 30 | 2.1 | 105 | 3.0 |
| | | 40 | 2.8 | 98 | 2.8 |
| | | 50 | 3.4 | 90 | 2.5 |
| | | 60 | 4.1 | 83 | 3.1 |
| APO | 698 20/15 | 20 | 1.4 | 145 | 4.1 |
| | | 30 | 2.1 | 134 | 3.8 |
| | | 40 | 2.8 | 125 | 3.5 |
| | | 50 | 3.4 | 117 | 3.3 |
| APO | 885 25/19 | 20 | 1.4 | 181 | 5.1 |
| | | 30 | 2.1 | 169 | 4.8 |
| | | 40 | 2.8 | 158 | 4.5 |
| | | 50 | 3.4 | 148 | 4.2 |
| | | 60 | 4.1 | 138 | 3.9 |
| APO | 1072 30/22 | 20 | 1.4 | 218 | 6.1 |
| | | 30 | 2.1 | 205 | 5.8 |
| | | 40 | 2.8 | 192 | 5.4 |
| | | 50 | 3.4 | 180 | 5.1 |
| | | 60 | 4.1 | 168 | 4.8 |

VACUUM PUMP SPECIFICATIONS

| MODEL | SPEED HP/KW | CAPACITY | | VAC. - HG | |
|-------|----------------|----------|---------------------|-----------|-----|
| | | CFM | M ³ /MIN | IN | MM |
| APL | 780 5/3 | 120 | 3.4 | 5 | 127 |
| | | 114 | 3.2 | 10 | 254 |
| | | 105 | 3.0 | 15 | 381 |
| | | 92 | 2.6 | 20 | 508 |
| | | 60 | 1.7 | 25 | 635 |
| | | - | - | 28 | 711 |
| APO | 739 7.5/5.6 | 167 | 4.7 | 5 | 127 |
| | | 164 | 4.6 | 10 | 254 |
| | | 157 | 4.4 | 15 | 381 |
| | | 145 | 4.1 | 20 | 508 |
| | | 99 | 2.8 | 25 | 635 |
| APO | 937 10/7.5 | 198 | 5.6 | 5 | 127 |
| | | 193 | 5.5 | 10 | 254 |
| | | 185 | 5.2 | 15 | 381 |
| | | 169 | 4.8 | 20 | 508 |
| | | 117 | 3.5 | 25 | 635 |
| | | - | - | 28 | 711 |

ATLE6

DIMENSIONS

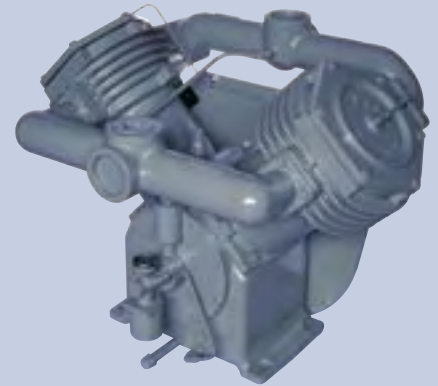
| MODEL | BORE DIAMETER | | STROKE | SUCTION & DISCHARGE PIPE SIZE NPT | DIMENSIONS L x W x H | WEIGHT | |
|-------|---------------|-------|--------|-----------------------------------|----------------------|--------|-----|
| | in | mm | | | | lbs | kg |
| ATLE6 | in | 7.875 | 3 | 3 | 41 x 29 x 30 | lbs | 750 |
| | mm | 200 | 76 | 76 | 1041 x 737 x 762 | kg | 340 |

SPECIFICATIONS

| SPEED RPM | PISTON DISPLACEMENT | | OIL CAPACITY | | MAXIMUM PRESSURE | | DISCHARGE AIR TEMP | | DUTY CYCLE | FLOW | | BHP | |
|-----------|---------------------|---------------------|--------------|--------|------------------|------|--------------------|-----|--------------|------|---------------------|-----|----|
| | CFM | M ³ /MIN | QUARTS | LITERS | PSIG | BARG | °F | °C | | CFM | M ³ /MIN | HP | KW |
| | | | | | | | | | | | | | |
| 1550 | 262 | 7.8 | 9 | 8.5 | 30 | 2.07 | 400 | 204 | intermittent | 180 | 5.1 | 29 | 22 |



APL
Single Stage Compressor



APO
Single Stage Compressor



ATLE6
Single Stage Compressor



ATLE6

Typical ATLE6 compressor direct connected to an internal combustion engine.
Note: Engine and coupling supplied by others.

AVLAVCAA, AVLANCAA, AND AVLEKCAA

25" HG-350 PSIG (6.9–17.24 Bars)
Continuous Operation 7.5-40 HP (5.6-30 kW)

DIMENSIONS

| MODEL | BORE DIAMETER | | STROKE | INLET | DISCHARGE | DIMENSIONS L x W x H | WEIGHT | |
|----------|---------------|-----------|--------|-------|-----------|-------------------------|--------|-----|
| | in | mm | | | | | lbs | kg |
| AVLAVCAA | in | 8.00/4.25 | 4.50 | 3.0 | 2.0 | 40 x 27 x 33 | lbs | 680 |
| | mm | 203/108 | 114 | 76 | 51 | 1016 x 686 x 838 | kg | 308 |
| AVLANCAA | in | 4.25 | 4.50 | 2.0 | 2.0 | 38 x 27 x 33 | lbs | 600 |
| | mm | 108 | 114 | 51 | 51 | 965 x 686 x 838 | kg | 272 |
| AVLEKCAA | in | 7.50 | 4.50 | 3.0 | 3.0 | 38 x 27 x 33 | lbs | 600 |
| | mm | 191 | 114 | 76 | 76 | 965 x 686 x 838 | kg | 272 |

COMPRESSORS SPECIFICATIONS

| HP --- KW | SPEED | PRESSURE | | CAPACITY | |
|-----------------|---|----------|-------|----------|---------------------|
| | | PSIG | BARS | CFM | M ³ /MIN |
| AVLAVCAA-GD | | | | | |
| 25 --- 19 | 968 | 100 | 6.90 | 101 | 2.86 |
| | 922 | 125 | 8.62 | 96.5 | 2.73 |
| | 830 | 175 | 12.07 | 85 | 2.41 |
| | 784 | 250 | 17.24 | 78 | 2.21 |
| 30 --- 22 | 1106 | 100 | 6.90 | 116 | 3.29 |
| | 1014 | 125 | 8.62 | 105 | 2.97 |
| | 968 | 175 | 12.07 | 99 | 2.80 |
| | 876 | 250 | 17.24 | 87 | 2.46 |
| AVLANCAA-GD | | | | | |
| 40 --- 30 | Suction Pressures: 1–140 psig Discharge Pressure: up to 350 psig | | | | |

VACUUM PUMP SPECIFICATIONS

| HP --- KW | SPEED | CAPACITY | | VAC. - HG | |
|--------------------------|-------|----------|---------------------|-----------|-----|
| | | CFM | M ³ /MIN | IN | MM |
| AVLEKCAA-GD | | | | | |
| 7.5–10 --- 5.6–7.5 | 870 | 169 | 4.79 | 5 | 127 |
| | | 160 | 4.53 | 10 | 254 |
| | | 146 | 4.13 | 15 | 381 |
| | | 122 | 3.46 | 20 | 508 |
| | | 62 | 1.75 | 25 | 635 |



AVLEKCAA
Single Stage Vacuum Pump

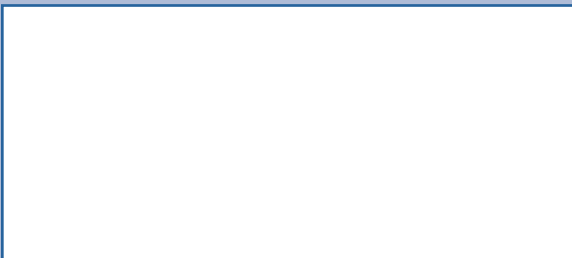


AVLANCAA
Single Stage Booster



AVLAVCAA
Two Stage Compressor

Champion Authorized Distributor



CHAMPION[®]
A Gardner Denver Product

1301 North Euclid Avenue
Princeton, Illinois 61356 USA
Phone 815/875-3321
Fax 815/872-0421
E-mail: Champion@championpneumatic.com
www.championpneumatic.com

© 2004 Gardner Denver, Inc.
Printed in U.S.A.
C1-1-5-215 1st Ed. 9/04

Due to Champion's continuing product development program, specifications and materials are subject to change without notice or obligation.

