

Have expensive tools?

# rousseau

has the **storage solution** for you!



**NC TOOL STORAGE SYSTEM**



**THE SPACE EFFICIENCY PEOPLE**

## TEAM SUCCESS

Rousseau Metal Inc. was founded in 1950. Since that time, we have designed, manufactured and marketed industrial storage systems. As an example of our growth and vitality over the years, our installations are over 150,000 square feet and utilize the latest, cutting-edge technology.

Our Research & Development dept. along with our Sales & Marketing dept. are in constant evolution. This allows us to offer a wide range of products that respond to strict criteria, guaranteeing performances high enough to satisfy even the most discerning customer.

We offer you a complete and integrated storage solution: mobile carts, modular drawer systems for shelving and cabinets, an industrial shelving system, Mini-racking, and workstations that are adapted to your reality; the cutting tool industry. These products are tailored to respond to your needs no matter how specialized they may be. We are proud to be known as "The Space Efficiency People."

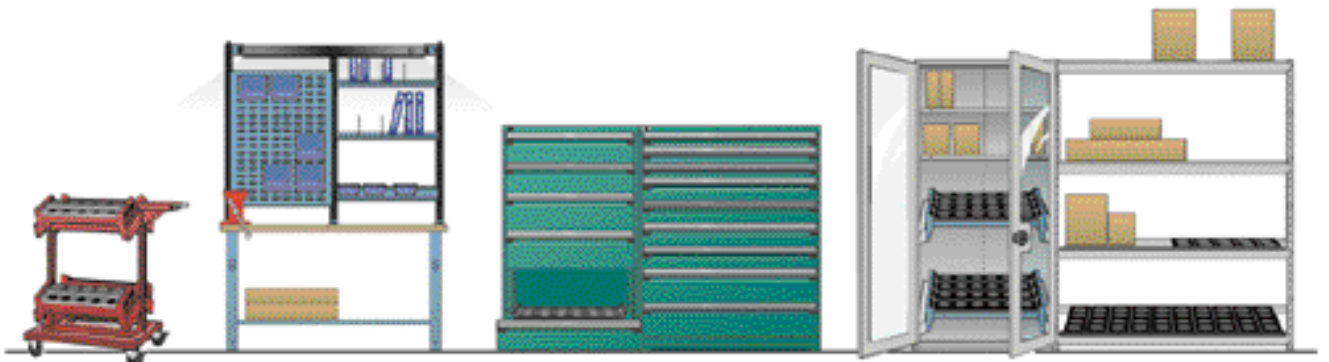


## NC Tool Storage System

The NC tool storage system has been designed to ensure maximum protection of your NC tools during handling, transport and storage.

With its original two-level design, the tool rack offers improved support and increased stability by preventing tools from falling out, even in an inclined position. The tool rack surface is made of sturdy PVC and protects tools against blows, corrosion and splattering molten metal while favoring coolant drainage and limiting contact surfaces with the tool.

The tool rack is offered with perforations to insert Taper, Straight, Sandvik Capto, HSK, KM and VDI. The tool rack is also available without perforations.

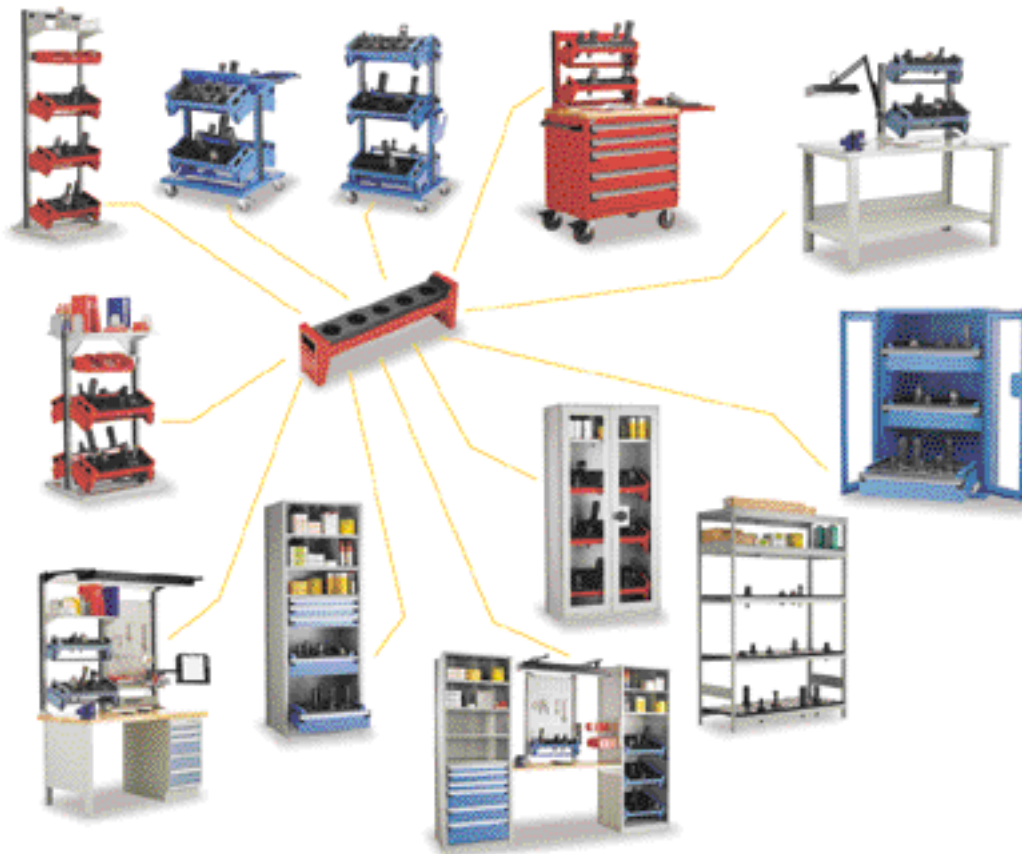


# Introduction



## Table of Contents

	Page(s)
Introduction .....	.2
Colors .....	.3
Application Model .....	.4-5
Tool Racks .....	.6
Mobile Carts .....	.7
Stationary Storage Systems for Tools .....	.8-9
Stationary and Mobile Storage Cabinets .....	.10
Spider® Shelving System .....	.11
Workstation System .....	.12-13
Computer Cabinet .....	.14
Accessories .....	.15



### Standard Colors



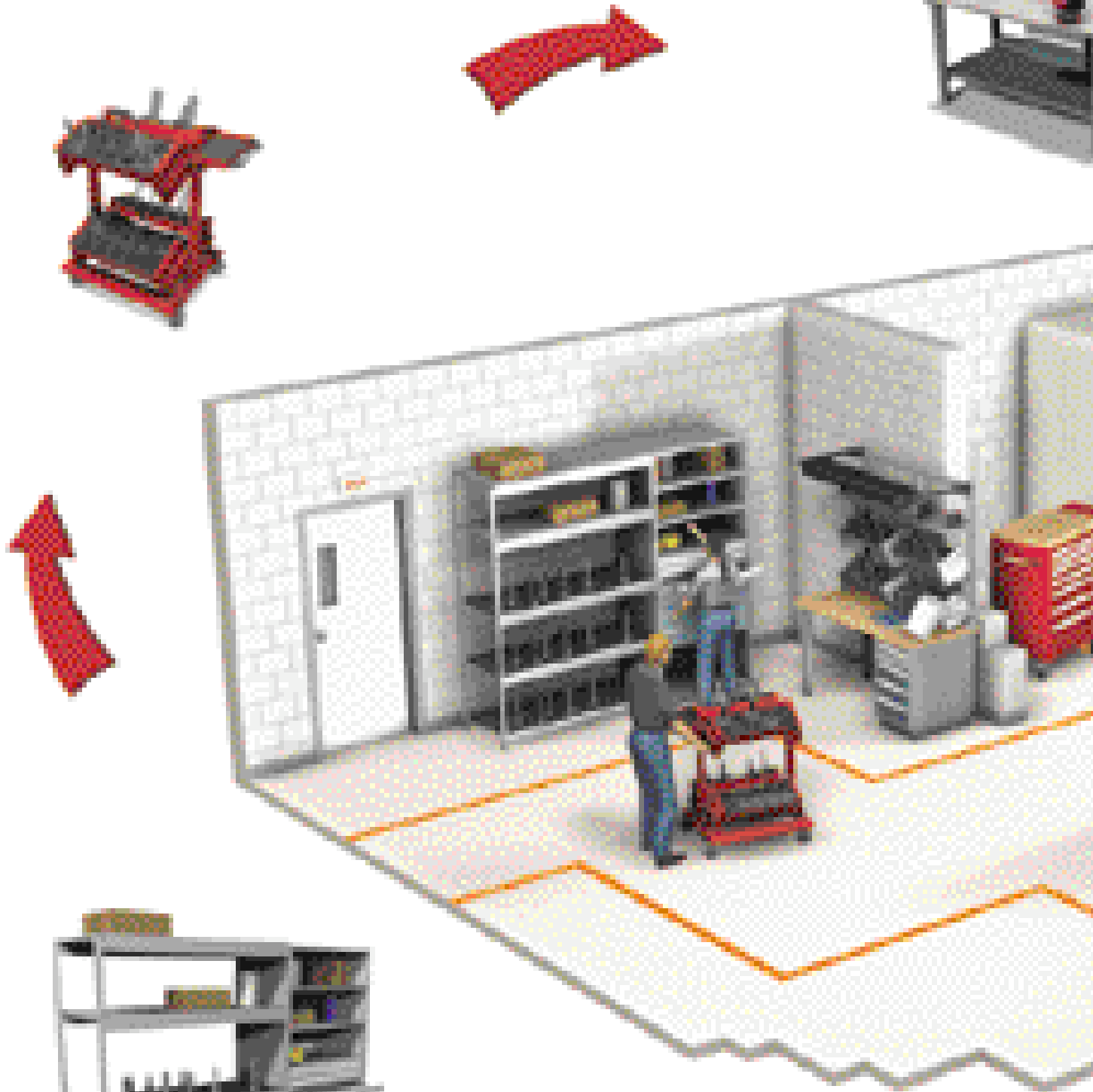
### Handle End Caps or Door Handle



Colors may differ slightly from those illustrated.  
For custom colors, contact our customer service representatives.

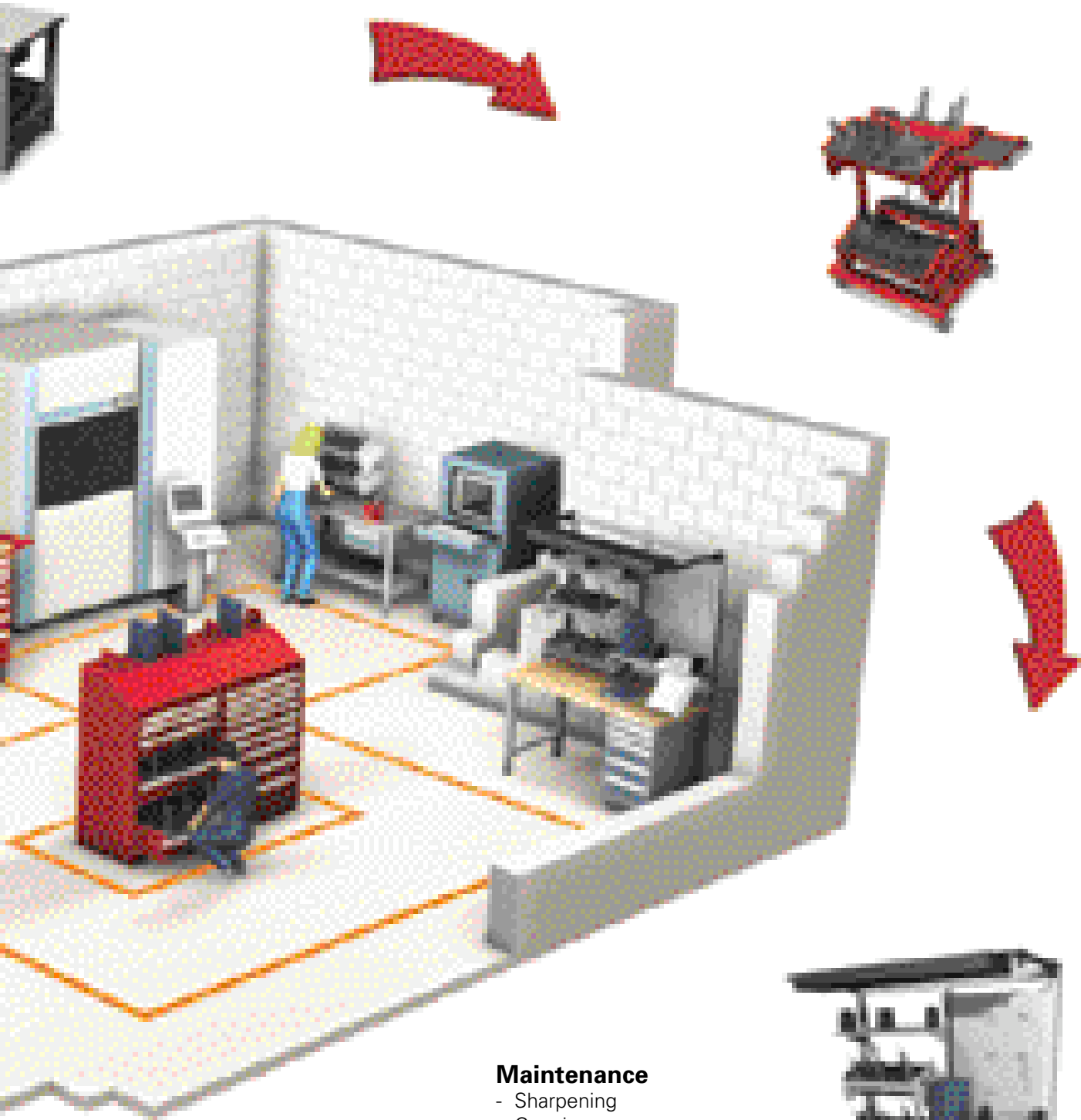
### Regular operations

- Part and tool manipulation
- Temporary storage
- Data processing



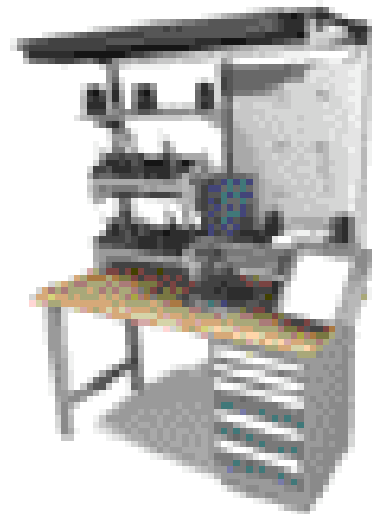
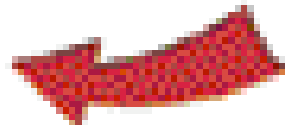
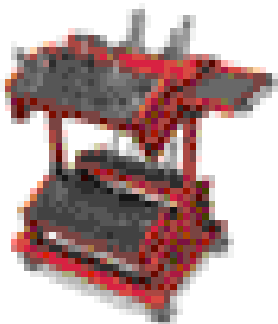
### Central stockroom

- Storage
- Preparation

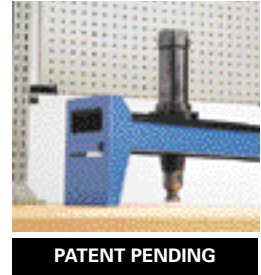


### Maintenance

- Sharpening
- Gauging
- Tip changing



The tool rack, the core of the NC Tool Storage System, is compatible with the entire Rousseau product line. The compact and sturdy rack is equipped with practical, ergonomic handles making it easy to carry. However, its greatest advantage is the protection it can offer your tools. Made of sturdy PVC, the extruded part of the tool rack protects your tools against blows while allowing for coolant drainage. The contact point between tools and the rack help prevent corrosion.

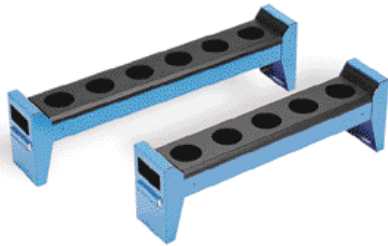


Advantages :

- Avoids accidental contact between tools ;
- Prevents corrosion and premature wear due to inappropriate storage ;
- Minimizes your tool acquisition and reconditioning costs ;
- The identification zone allows for quick retrieval of tools.

Patent Pending.

## Equivalency Chart



Tool Type	Stand – Cabinet - Shelving				Mini-Racking			
	30" tool rack	number of holes	36" tool rack	number of holes	18" PVC platform	number of holes	24" PVC platform	number of holes
Blank rack	NC10-3000	-	NC10-3600	-	NC30-1800	-	NC30-2400	-
Taper 30	NC12-3001	10	NC12-3601	12	NC31-1801	8	NC31-2401	10
Taper 40	NC12-3003	7	NC12-3603	8	NC31-1803	7	NC31-2403	9
Taper 50	NC12-3005	5	NC12-3605	6	NC31-1805	4	NC31-2405	5
3/4" Straight	NC12-3010	20	NC12-3610	24	NC31-1810	14	NC31-2410	18
1" Straight	NC12-3011	20	NC12-3611	24	NC31-1811	14	NC31-2411	18
1 1/4" Straight	NC12-3013	20	NC12-3613	24	NC31-1813	14	NC31-2413	18
1 1/2" Straight	NC12-3015	8	NC12-3615	10	NC31-1815	5	NC31-2415	7
1 3/4" Straight	NC12-3016	8	NC12-3616	10	NC31-1816	5	NC31-2416	7
2" Straight	NC12-3018	6	NC12-3618	7	NC31-1818	4	NC31-2418	5
2 1/4" Straight	NC12-3019	6	NC12-3619	7	NC31-1819	4	NC31-2419	5
2 1/2" Straight	NC12-3021	6	NC12-3621	7	NC31-1821	4	NC31-2421	5
C4 Sandvik Capto	NC12-3031	22	NC12-3631	26	NC31-1831	18	NC31-2431	24
C5 Sandvik Capto	NC12-3032	10	NC12-3632	12	NC31-1832	7	NC31-2432	9
C6 Sandvik Capto	NC12-3033	7	NC12-3633	8	NC31-1833	7	NC31-2433	9
HSK 32	NC12-3041	22	NC12-3641	26	NC31-1841	18	NC31-2441	24
HSK 40	NC12-3042	22	NC12-3642	26	NC31-1842	18	NC31-2442	24
HSK 50	NC12-3043	10	NC12-3643	12	NC31-1843	8	NC31-2443	10
HSK 63	NC12-3044	7	NC12-3644	8	NC31-1844	5	NC31-2444	7
HSK 80	NC12-3045	5	NC12-3645	6	NC31-1845	4	NC31-2445	5
HSK 100	NC12-3046	4	NC12-3646	5	NC31-1846	3	NC31-2446	4
32 KM	NC12-3050	22	NC12-3650	26	NC31-1850	18	NC31-2450	24
40 KM	NC12-3051	22	NC12-3651	26	NC31-1851	18	NC31-2451	24
50 KM	NC12-3052	10	NC12-3652	12	NC31-1852	8	NC31-2452	10
63 KM	NC12-3053	7	NC12-3653	8	NC31-1853	5	NC31-2453	7
VDI 30 mm	NC12-3060	6	NC12-3660	7	NC31-1860	7	NC31-2460	9
VDI 40 mm	NC12-3061	5	NC12-3661	6	NC31-1861	4	NC31-2461	5
VDI 50 mm	NC12-3062	4	NC12-3662	5	NC31-1862	3	NC31-2462	4

**NOTE** The number of tools that a tool rack can hold varies according to tool diameter and the width of the tool rack.

# Mobile Carts



The Rousseau mobile carts have been designed to optimize your changing workspace set-up, carry your tools efficiently, facilitate moving your tools, and all of this, while providing adequate protection.

The carts are equipped with smooth-rolling, silent, 4" polyurethane casters that glide easily even over metal fragments and greasy surfaces.

The tool rack's PVC surface ensures protection against blows, corrosion and spattering molten metal. The racks are inclined 20° for easy access during handling.

## 36" Cart



NCW0101

8 - 30" W tool racks with ergonomic handles ;  
 4" polyurethane casters that do not mark floors ;  
 Shelf with aluminum handle ;  
 Dimensions: 32" W X 27" D X 41 1/4" H.

Tool Type	Model #	Maximum Tool Quantity
Taper 40	NCW0100	56
Taper 50	NCW0101	40
HSK 50	NCW0102	80
HSK 63	NCW0103	56
50 KM	NCW0104	80
63 KM	NCW0105	56

## 54" Cart




NCW0217

12 - 30" W tool racks with ergonomic handles ;  
 4" polyurethane casters that do not mark floors ;  
 Aluminum side handle for moving the cart ;  
 Document holder ;  
 Dimensions : 32" W X 27" D X 59 1/4" H.

Tool Type	Model #	Maximum Tool Quantity
Taper 40	NCW0216	84
Taper 50	NCW0217	60
HSK 50	NCW0218	120
HSK 63	NCW0219	84
50 KM	NCW0220	120
63 KM	NCW0221	84

**NOTE** If your tool type is not shown in the charts above, please refer to page 6, or contact our customer service department.

SEE PAGE 6

 **Maximum capacity: 1200 lb, evenly distributed load.**



Whether for storing specialized materials for metal working, such as drill bits, collets, punches, tool holders or standard tools such as pliers, files, wrenches or various fittings and sockets, Rousseau offers a multitude of solutions: stationary stands, modular cabinets, shelving with drawers, Mini-racking, etc. All of these possibilities mean that you are sure to find the storage solution that best fits your specific needs.

Our range of storage possibilities ensures ideal protection against corrosion and premature aging of your tools caused by inadequate storage. Your tools are precious; let Rousseau help you protect them!

## 54" Stand



NCW0248

8 - 30" W tool racks with ergonomic handles ;  
 2 plastic bin rails (note: the red plastic bins are not sold by Rousseau) ;  
 2 shelves, each with 3 dividers ;  
 Dimensions: 32" W X 27" D X 59 1/4" H.

Tool Type	Model #	Maximum Tool Quantity
Taper 40	NCW0247	56
Taper 50	NCW0248	40
HSK 50	NCW0249	80
HSK 63	NCW0250	56
50 KM	NCW0251	80
63 KM	NCW0252	56

## Tool Storage Cabinet



NCM0067

12 tool racks with ergonomic handles ;  
 3 drawers that open 100%, 12" clearance between the drawers ;  
 2" cabinet base allows the cabinet to be moved with a forklift ;  
 Includes the true one-at-a-time locking mechanism ;  
 Available without doors, with solid doors, or glass doors (standard lock included) ;  
 The doors open 180° permitting full clearance space for easy tool handling ;  
 The polycarbonate surface of the glass doors is highly impact resistant.

Dimensions	Accessories	Taper 40	Taper 50	HSK 50	HSK 63	50 KM	63 KM
W D H							
30" 27" 60"	No doors	NCM0011	NCM0061	NCM0111	NCM0161	NCM0211	NCM0261
	Glass doors	NCM0012	NCM0062	NCM0112	NCM0162	NCM0212	NCM0262
	Solid doors	NCM0013	NCM0063	NCM0113	NCM0163	NCM0213	NCM0263
Maximum Tool Quantity : (12 racks)		84	60	120	84	120	84
36" 24" 60"	No doors	NCM0017	NCM0067	NCM0117	NCM0167	NCM0217	NCM0267
	Glass doors	NCM0018	NCM0068	NCM0118	NCM0168	NCM0218	NCM0268
	Solid doors	NCM0019	NCM0069	NCM0119	NCM0169	NCM0219	NCM0269
Maximum Tool Quantity : (12 racks)		96	72	144	96	144	96

## Shelving with Drawers



NCS2266

8 tool racks with ergonomic handles ;  
 1 - 3" H drawer with groove trays ;  
 2 - 4" H drawers included : 1 drawer with foam for tools; 1 with compartments ;  
 2 drawers with tool racks, 12" clear space between drawers ;  
 Drawers open 100% ;  
 Shelving with closed uprights ;  
 The 75" H shelving unit includes 2 shelf levels and 2 dividers; the 87" unit includes 3 shelf levels and 4 dividers.

Dimensions	Taper 40	Taper 50	HSK 50	HSK 63	50 KM	63 KM
W D H						
30" 24" 75"	NCS2251	NCS2261	NCS2271	NCS2281	NCS2291	NCS2301
30" 24" 87"	NCS2252	NCS2262	NCS2272	NCS2282	NCS2292	NCS2302
Maximum Tool Quantity : (8 racks)		56	40	80	56	80
36" 24" 75"	NCS2255	NCS2265	NCS2275	NCS2285	NCS2295	NCS2305
36" 24" 87"	NCS2256	NCS2266	NCS2276	NCS2286	NCS2296	NCS2306
Maximum Tool Quantity : (8 racks)		64	48	96	64	96



**NOTE** If your tool type is not shown in the charts above, please refer to page 6, or contact our customer service department.

SEE PAGE 6

# Stationary Storage Systems for Tools



## Shelving with Adaptors



NCS4025

9 - 36" W tool racks, with ergonomic handles ;  
 The racks are inclined 20° to facilitate tool access and handling ;  
 75" H shelving unit includes 1 shelf level and 2 dividers; the 87" unit includes 2 shelf levels each with 2 dividers.

Dimensions			Accessories	Taper 40	Taper 50	HSK 50	HSK 63	50 KM	63 KM
W	D	H							
36"	18"	75"	No doors	NCS4005	NCS4025	NCS4045	NCS4065	NCS4085	NCS4105
			Glass doors	NCS4006	NCS4026	NCS4046	NCS4066	NCS4086	NCS4106
36"	18"	87"	No doors	NCS4007	NCS4027	NCS4047	NCS4067	NCS4087	NCS4107
			Glass doors	NCS4008	NCS4028	NCS4048	NCS4068	NCS4088	NCS4108
Maximum Tool Quantity : (9 racks)				72	54	108	72	108	72

## Mini-Racking for High-Density Storage



NCS6024

3 levels with platforms for tools ;  
 Full-width label holders for tool identification ;  
 75" Mini-Racking unit includes 1 steel decking level, the 87" unit includes 2 steel decking levels for bulk storage.



Dimensions			Taper 40	Taper 50	HSK 50	HSK 63	50 KM	63 KM
W	D	H						
60"	18"	75"	NCS6001	NCS6021	NCS6031	NCS6041	NCS6051	NCS6061
60"	18"	87"	NCS6002	NCS6022	NCS6032	NCS6042	NCS6052	NCS6062
Maximum Tool Quantity :			210	120	240	150	240	150
60"	24"	75"	NCS6003	NCS6023	NCS6033	NCS6043	NCS6053	NCS6063
60"	24"	87"	NCS6004	NCS6024	NCS6034	NCS6044	NCS6054	NCS6064
Maximum Tool Quantity :			270	150	300	210	300	210
72"	18"	75"	NCS6005	NCS6025	NCS6035	NCS6045	NCS6055	NCS6065
72"	18"	87"	NCS6006	NCS6026	NCS6036	NCS6046	NCS6056	NCS6066
Maximum Tool Quantity :			250	144	288	180	288	180
72"	24"	75"	NCS6007	NCS6027	NCS6037	NCS6047	NCS6057	NCS6067
72"	24"	87"	NCS6008	NCS6028	NCS6038	NCS6048	NCS6058	NCS6068
Maximum Tool Quantity :			324	180	360	252	360	252

Note: The platform can only receive tools with collets. It is not compatible with Straight Shank tools without collets.

## Multipurpose Workstation



NCS8015

13 tool racks with ergonomic handles ;  
 6 drawers included: 1 - 3" drawer, 2 - 4" drawers, 2 - 7" drawers and 1 - 9" drawer ;  
 6 shelf levels and 8 dividers ;  
 Laminated wood top, 60" W x 24" D ;  
 Lamp and power outlet strip ;  
 Perforated panel with 10 hooks ;  
 Louvered panel for plastic bins (note: the red bins are not sold by Rousseau).

Dimensions			Taper 40	Taper 50	HSK 50	HSK 63	50 KM	63 KM
W	D	H						
120**	24"	87"	NCS8004	NCS8013	NCS8023	NCS8033	NCS8043	NCS8053
Maximum Tool Quantity :			91	65	130	91	130	91
132**	24"	87"	NCS8005	NCS8015	NCS8025	NCS8035	NCS8045	NCS8055
Maximum Tool Quantity :			103	77	155	103	155	103

\*2 - 30" W shelving \*\* 2 - 36" W shelving

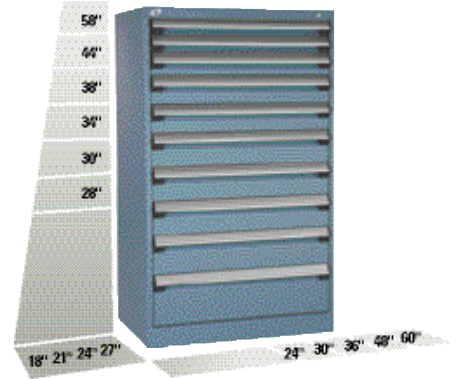
**NOTE** If your tool type is not shown in the charts above, please refer to page 6, or contact our customer service department.

SEE PAGE 6

The Rousseau modular cabinet has a sturdy and distinct appearance that works in all sorts of different environments. It is characterized by the numerous dimensions available, its vast choice of accessories, its perfect modularity, but most of all, by its durability. Tests carried out at an independent laboratory proved that the Rousseau cabinet is the most durable on the market. The tests clearly demonstrated the superiority of the Rousseau drawer as it completed 3 times as many cycles as its closest competitor.

The cabinet features drawers with a 400 lb. capacity per drawer that open 100%.

Contact our customer service department for a personalized layout.



## High-Density Storage Cabinet



R5AHE-5801

8 drawers with compartments : 1 - 3" drawer, 1 - 5" drawer, 2 - 6" drawers, 2 - 7" drawers, 1 - 8" drawer, and 1 - 12" drawer ;  
 2" cabinet base allows the cabinet to be moved with a forklift ;  
 Standard lock included ;  
 Dimensions: 48" W x 24" D x 60" H.

## Repair / Preparation Cabinet



NCM8131

2 - 30" W tool racks with ergonomic handles ;  
 5 drawers with compartments : 2 - 4" drawers and 3 - 6" drawers ;  
 All drawers equipped with integrated lock-in mechanism ;  
 6" polyurethane casters that do not mark floors ;  
 Wide-grip aluminum handle facilitates manoeuvring and turning the cabinet ;  
 Standard lock included ;  
 Laminated wood top, 36" W x 24" D ;  
 Foldaway shelf.

Dimensions			Taper 40	Taper 50	HSK 50	HSK 63	50 KM	63 KM
W	D	H						
36"	24"	61 1/2"	NCM8121	NCM8131	NCM8141	NCM8151	NCM8161	NCM8171
Maximum Tool Quantity (2 racks):			14	10	20	14	20	14

## Multi-Drawer Mobile Cabinet



R5GHE-3807

7 - 24" W drawers with compartments : 4 - 4" drawers , 2 - 6" drawers and 1 - 8" drawer ;  
 1 - 48" W drawer ;  
 All drawers equipped with integrated lock-in mechanism ;  
 1 single integrated door with lock ;  
 6" polyurethane casters that do not mark floors ;  
 Wide-grip aluminium handle facilitates manoeuvring and turning the cabinet ;  
 Standard lock included on the cabinet ;

60" W steel top with rubber mat ;  
 Side hanging cabinet with single, integrated door with lock.

Dimensions			
W	D	H	
62"	24"	45 1/2"	R5GHE-3807
62"	27"	45 1/2"	R5GHG-3807

**NOTE** If your tool type is not shown in the chart above, please refer to page 6, or contact our customer service department.

SEE PAGE 6

# Spider® Shelving System



With sturdy construction and quick assembly, the Spider® Shelving System meets all of your storage needs. The advantage of being able to expand shelving in width, depth and height, along with a multitude of accessories, allows you to create practical storage solutions that meet both your current and future needs. Assembly is simple: the shelves are fastened to the posts using four compression clips. As a result, shelving layouts can be changed quickly.

Many layouts are possible, contact our customer service department for a customized solution.



## Open Shelving



SHE1024

Box-type shelves with front and rear edges that are roll-formed and welded ;  
Shelves adjustable every inch c/c ;  
Welded uprights.

Dimensions			Capacity per Shelf		Shelf Levels			
W	D	H	4	5	6	7		
30"	24"	75"	575 lb	SHE1103	SHE1109	SHE1115	SHE1203	
30"	24"	87"	575 lb	SHE1106	SHE1112	SHE1118	SHE1206	
36"	24"	75"	625 lb	SHE1003	SHE1009	SHE1015	SHE1021	
36"	24"	87"	625 lb	SHE1006	SHE1012	SHE1018	SHE1024	

## Closed Shelving



SHE2024

Box-type shelves with front and rear edges that are roll-formed and welded ;  
Shelves adjustable every inch c/c ;  
Welded uprights.

Dimensions			Capacity per Shelf		Shelf Levels			
W	D	H	4	5	6	7		
30"	24"	75"	575 lb	SHE2103	SHE2109	SHE2115	SHE2203	
30"	24"	87"	575 lb	SHE2106	SHE2112	SHE2118	SHE2206	
36"	24"	75"	625 lb	SHE2003	SHE2009	SHE2015	SHE2021	
36"	24"	87"	625 lb	SHE2006	SHE2012	SHE2018	SHE2024	

## Shelving with Drawers



R5SEE-874809

Box-type shelves with front and rear edges that are roll-formed and welded ;  
Shelves adjustable every inch c/c ;  
Closed welded uprights with back panel ;  
7 drawers with compartments : 2 - 3" drawers, 3 - 4" drawers, 2 - 6" drawers ;  
1 front access roll-out shelf ;  
400 lb. capacity per drawer; 100% opening.

Dimensions			
W	D	H	
36"	24"	75"	R5SEE-754809
36"	24"	87"	R5SEE-874809
48"	18"	75"	R5SHC-754809
48"	18"	87"	R5SHC-874809
48"	24"	75"	R5SHE-754809
48"	24"	87"	R5SHE-874809



Whether you are looking for a basic workbench, with two legs and a top; or a specialized table, stationary or mobile, you will find a solution for each and every application. Rousseau offers you several work surface dimensions for each of the surfaces offered such as painted steel, laminated wood, wood composite and plastic laminate.

Many layouts are possible, contact our customer service department for a customized solution.

## Open Workbench - Single or Double



WSA2902

Top of your choice ;

Legs 27" D x 32" H, equipped with electrical outlet knockouts on front of the leg ;  
24" D shelf surface under work surface.

Dimensions			Type of Top			
W	D	H	Steel	Lam. Wood	Plastic Lam.	Wood Comp.
Single						
60"	30"	34"	WSA1019	WSA2019	WSA3019	WSA5019
72"	30"	34"	WSA1023	WSA2023	WSA3023	WSA5023
Double						
96"	30"	34"	WSA1902	WSA2902	WSA3902	WSA5902
120"	30"	34"	WSA1904	WSA2904	WSA3904	WSA5904
144"	30"	34"	WSA1906	WSA2906	WSA3906	WSA5906

## Closed Workbench - Single or Double



WSA2971

Top of your choice ;

Legs 27" D x 32" H, equipped with electrical outlet knockouts on front of the leg ;  
24" D shelf surface under work surface ;

Sliding doors with lock ;

Note : the single workstation also includes a steel shelf 12" D.

Dimensions			Type of Top			
W	D	H	Steel	Lam. Wood	Plastic Lam.	Wood Comp.
Single						
60"	30"	34"	WSA1070	WSA2070	WSA3070	WSA5070
72"	30"	34"	WSA1071	WSA2071	WSA3071	WSA5071
Double						
96"	30"	34"	WSA1971	WSA2971	WSA3971	WSA5971
120"	30"	34"	WSA1973	WSA2973	WSA3973	WSA5973
144"	30"	34"	WSA1975	WSA2975	WSA3975	WSA5975

## Mobile Workbench



WSW1032

Steel top with back stop ;

Legs 27" D x 32" H, equipped with electrical outlet knockouts on front of the leg ;  
4" polyurethane casters that do not mark floors ;

Dimensions : 60" W x 30" D x 35 1/2" H.

# Workstation System



## Workbench with Cabinet



R5WH5-2007

Laminated wood top ;  
 Legs 27" D x 32" H, equipped with electrical outlet knockouts on front of the leg ;  
 Cabinet 24" W x 27" D with 4 drawers with compartments : 2 - 4" drawers, 1 - 6" drawer, and 1 - 12" drawer ;  
 Drawers open 100% ;  
 Dimensions : 60" W x 30" D x 34" H.

## Workstation with Tool Racks



NCW0527

Painted steel top ;  
 3 - 30" W tool racks with ergonomic handles ;  
 The racks are inclined 20° to facilitate tool access and handling ;  
 Legs 27" D x 32" H, equipped with electrical outlet knockouts on front of the leg ;  
 24" D shelf surface under work surface ;  
 Dimensions : 60" W x 30" D x 58" H.

Tool Type	Model #	Maximum Tool Quantity
Taper 40	NCW0522	21
Taper 50	NCW0527	15
HSK 50	NCW0532	30
HSK 63	NCW0537	21
50 KM	NCW0542	30
63 KM	NCW0547	21

## Workstation with Storage Cabinet and Tool Racks



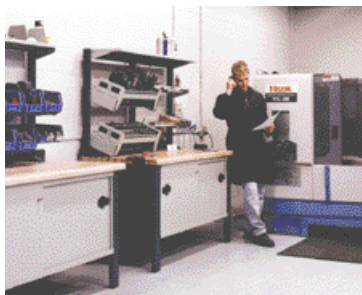
NCW0584

Laminated wood top ;  
 3 - 30" W tool racks with ergonomic handles ;  
 The racks are inclined 20° to facilitate tool access and handling ;  
 Accessories:  
 - Perforated panel with 10 hooks ;  
 - Tiltable shelf with 3 dividers ;  
 - Lamp ;  
 - Document holder with hinged arm ;  
 - Power outlet channel ;  
 - Tool tray ;  
 Legs 27" D x 32" H, equipped with electrical outlet knockouts on front of the leg ;  
 Cabinet 24" W x 27" D with 4 drawers with compartments : 2 - 3" drawers, 3 - 6" drawers ;  
 Drawers open 100% ;  
 Dimensions: 60" W X 30" D X 82" H.

Tool Type	Model #	Maximum Tool Quantity
Taper 40	NCW0582	21
Taper 50	NCW0584	15
HSK 50	NCW0586	30
HSK 63	NCW0588	21
50 KM	NCW0590	30
63 KM	NCW0592	21

**NOTE** If your tool type is not shown in the charts above, please refer to page 6, or contact our customer service department.

SEE PAGE 6



# Computer Cabinet

The Rousseau computer cabinet ensures maximum protection of computer hardware from dust, metal fragments and other debris.

The glass doors are perfect for use with large monitors and does not reduce your field of vision. They are demagnetized in order to eliminate image distortion. A front access, 4" base allows the cabinet to be moved with a forklift or pallet-jack if required. It is also possible to add casters and have the cabinet mobile at all times. Plus, the back panel allows easy installation of your computer system and is equipped with a ventilator with filter to limit dust infiltration and reduce heat.

Many layouts are possible, contact our customer service department for a customized solution.

## Basic Computer Cabinet

- 21 3/4" x 19" glass panel ;
- Integrated single door with 2 storage shelves for computer and printer ;
- Locks (doors and keyboard drawer) ;
- The fixed cabinet has a recessed base that allows the cabinet to be moved with a forklift or a pallet-jack ;
- The mobile cabinet is equipped with 4" polyurethane casters that do not mark floors and glide smoothly and quietly.

### Dimensions

W	D	H	
30"	27"	62"	Fixed
30"	27"	63 1/4"	Mobile



R5JDG-5801

R5JDG-5821

## Computer Cabinet

- 21 3/4" x 19" glass panel ;
- Double doors with frame, bottom shelf and roll-out shelf (computer and printer) ;
- Locks (doors and keyboard tray) ;
- The fixed cabinet has a recessed base that allows the cabinet to be moved with a forklift or a pallet-jack ;
- The mobile cabinet is equipped with 4" polyurethane casters that do not mark floors and glide smoothly and quietly.

### Dimensions

W	D	H	
30"	27"	62"	Fixed
30"	27"	63 1/4"	Mobile



R5JDG-5805

R5JDG-5825



Rousseau offers you a wide range of accessories for varied storage solutions.

The drawers can be equipped with accessories such as foam that is oil resistant and non absorbent (foam for tools, collets or protection), and drawer partitioning accessories such as groove trays, plastic bins, partitions and dividers.

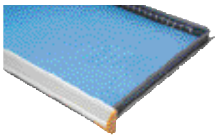
Rousseau shelving can be customized by adding accessories such as steel or glass doors to protect stored material as well as shelf dividers, perforated panels and louvered panels for plastic bins. Drawer in shelving applications can also be equipped with a vertical security bar.

The workstation system offers a multitude of accessories both above and below the work surface. A few of these include storage shelves, tack boards, marker panels and lighting.

Here are a few of the accessories we offer. Contact us; we have the products that will respond to your specific needs.

## Foam for Protection

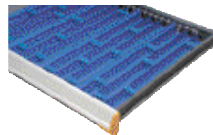
RG41



Protects material stored in the drawers.

## Groove Trays

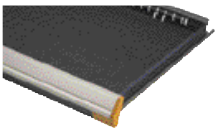
RG35



Useful in the storage and protection of long objects such as drill bits, borers, sockets, lathe parts, files, tools, etc.

## PVC Drawer Liner

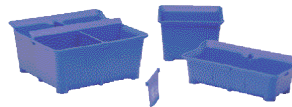
RG40



Non-skid surface protects the material stored in the drawers.

## Plastic Bins

RG20



Simplify storing, moving and managing small items. The 45° angle permits fast identification of bin contents and an easy grip when removing the bins. The bins are compatible with the 3" and 4" drawers as well as the louvered panel for workstations and shelving.

## Foam for Tools

RG42



This oil resistant and non-absorbent drawer foam protects your tools and allows for fast identification. Foam sold uncut.

## Solid and Glass Doors for Shelving

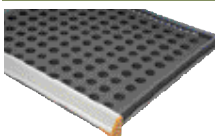
SH40-SH42



Doors open 180° with locking mechanism and built in handle. The polycarbonate surface of the glass doors is highly resistant to impacts.

## Foam for Collets

RG43



This oil resistant and non-absorbent drawer foam protects your collets and allows for fast identification. Foam sold uncut.

## Vertical Security Bar

RE80



Allows you to lock your items stored in drawers in shelving.



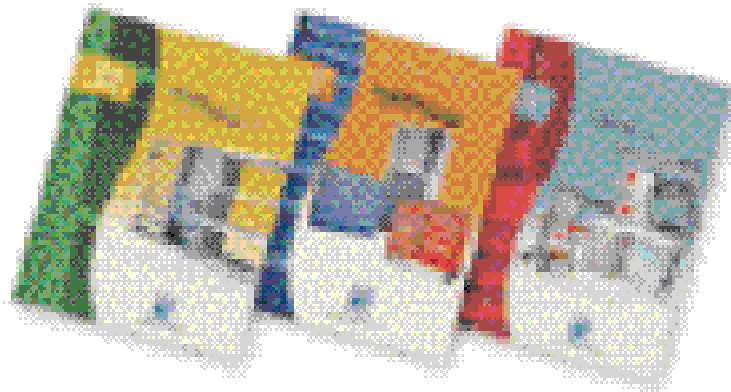
### The Space Efficiency People

With the ever-increasing challenge in producing reliable and innovative products, Rousseau strives to promote complete customer satisfaction by making every effort to manufacture products that meet specifications, always respecting time delays and quantity requirements.

President and Chief Executive Officer



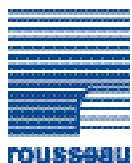
### Rousseau product line



**SPIDER® SHELVING SYSTEM**

**MODULAR DRAWER STORAGE SYSTEM**

**WORKSTATION SYSTEM**



Toll free 1 800 463-4271  
Telephone (418) 598-3381  
Fax (418) 598-6776  
E-mail sales@rousseau-metal.com  
105, avenue de Gaspé Ouest  
Saint-Jean-Port-Joli (Québec)  
G0R 9G0 Canada

[www.rousseau-metal.com](http://www.rousseau-metal.com)

For more information, please contact your local distributor:



7PM01A00  
ND1-MR06A

Rousseau is continuously improving its products and reserves the right to make any modifications judged necessary.

